

# Draft 2015 Annual Report | 2016-2021 TDP



Approved: August XX 2016 by Resolution 2016-XX

Comment Period: 7/20/2016 – 8/17/2016

Public Hearing: 8/17/2016 at 1:00 PM at the Burlington City  
Hall Council Chambers, 833 S Spruce St, Burlington, WA 98233



**Traducción:** Disponible mediante solicitud.

Email: [bwindler@skagittransit.org](mailto:bwindler@skagittransit.org)

Teléfono: 360-757-5179

## **BOARD OF DIRECTORS**

**Jill Boudreau**  
Mayor, Mount Vernon

**Kenneth Dahlstedt**  
Skagit County Commissioner

**Lisa Janicki**  
Skagit County Commissioner

**Steve Sexton, Chair**  
Mayor, Burlington

**Soren Jensen,**  
Labor Representative (non-voting member)

**Ron Wesen**  
Skagit County Commissioner

**Keith Wagoner, Vice Chair**  
Mayor, Sedro-Woolley

**Laurie Gere**  
Mayor Anacortes

**Rick DeGloria**  
Burlington City Council

**Dale Ragan**  
Mount Vernon City Council

## **EXECUTIVE DIRECTOR**

Dale S. O'Brien

## **MANAGERS**

Motoko Pleasant, Finance & Administration

Troy Fair, Operations

Chris Chidley, Information Technologies

Allan Schaner, Maintenance & Facilities

## Introduction

Skagit Transit's Six-Year Transit Development Plan (TDP) identifies how the agency will meet state and local long-range priorities for public transportation through capital improvements, operating changes, and other programs. It also addresses how such programs will be funded. The Plan conforms to the State's transportation system policy goals (RCW 47.04.280) and supports local comprehensive planning and economic objectives within Skagit County. State transportation system policy goals are:

- ✓ Economic vitality. To promote and develop transportation systems that stimulate, support, and enhance the movement of people and goods to ensure a prosperous economy;
- ✓ Preservation. To maintain, preserve, and extend the life and utility of prior investments in transportation systems and services;
- ✓ Safety. To provide for and improve the safety and security of transportation customers and the transportation system;
- ✓ Mobility. To improve the predictable movement of goods and people throughout Washington state;
- ✓ Environment. To enhance Washington's quality of life through transportation investments that promote energy conservation, enhance healthy communities, and protect the environment; and
- ✓ Stewardship. To continuously improve the quality, effectiveness, and efficiency of the transportation system.

Regional goals and priorities are set forth in the *Skagit-Island Counties Metropolitan and Regional Transportation Plan* and are consistent with the goals listed above.

Over the next six years Skagit Transit aims to maintain efficient fixed route service, a growing vanpool program, and ADA complementary transit service within three-quarters of a mile of local fixed route lines. Over the next six years, Skagit Transit also plans to modestly expand service into under-served, and unserved urban areas and to expand service days and hours on routes where demand has or will surpass the current level of service. Actions planned over the next six years are intended to conserve energy and improve access to employment centers, shopping areas, health facilities, housing areas, education facilities, and other existing bus, rail, and ferry systems for all persons irrespective of age, income or physical challenges. Importantly, Skagit Transit plans over the next six years to complete the relocation of its Maintenance, Operations, and Administrative Base to a new site that will sustain agency growth for the next 20+ years.

This document provides a framework for guiding service delivery over the next six years. It is reviewed annually and amended to reflect funding realities and changing service needs or objectives. This document is also a tool for communicating Skagit Transit's short- and mid-range plans to the public and is used within the organization to identify grant opportunities, for procurement planning, for budgetary purposes, and for updating the Regional Transportation Improvement Plan and the State's Transportation Improvement Plan.

## Contents

Introduction .....	4
Section 1: Organization and Funding .....	7
Section 2: Facilities.....	9
Section 3: Service Characteristics .....	10
<b>Fixed Route Service</b> .....	10
<b>ADA Transit</b> .....	11
<b>Vanpool Program</b> .....	12
<b>Fares</b> .....	13
Section 4: Service Connections .....	14
Section 5: Planning Goals.....	15
Section 6: Planned Activities, 2016-2021.....	16
Section 7: Capital Improvement Program 2016-2021 .....	21
Section 8: Operating Data .....	22
Section 9: Operating Revenues and Expenditures 2016-2021 .....	23
Appendix A - Public Participation Process .....	29
Appendix B – Public Transportation Management System Inventory.....	30



## Section 1: Organization and Funding

Skagit Transit was established under RCW 36.57A. The authority was established in 1993 when voters approved a 0.2% local sales tax (\$0.002 per \$1) to support transit service in the Mount Vernon and Burlington areas. Since initial voter approval in 1993, the Public Transit Benefit Area (PTBA), or service area, has expanded to include Anacortes, La Conner, Sedro-Woolley, Lyman, Hamilton, and Concrete. Voters in unincorporated South Fidalgo Island, Shelter Bay, Burlington Country Club, North and Northwest Skagit County, and Big Lake have also been annexed into the PTBA after successful voter initiatives to expand Skagit Transit's service area. In November 2008, voters approved an additional 0.2% sales tax to support transit service in the PTBA. Currently Skagit Transit is supported by a 0.4% sales tax. This equates to \$0.04 for every \$10 spent within the PTBA. Fares as well as capital and operating grants also support the expense of the transit system.

Skagit Transit is governed by a Board of Directors consisting of nine-members, including the:

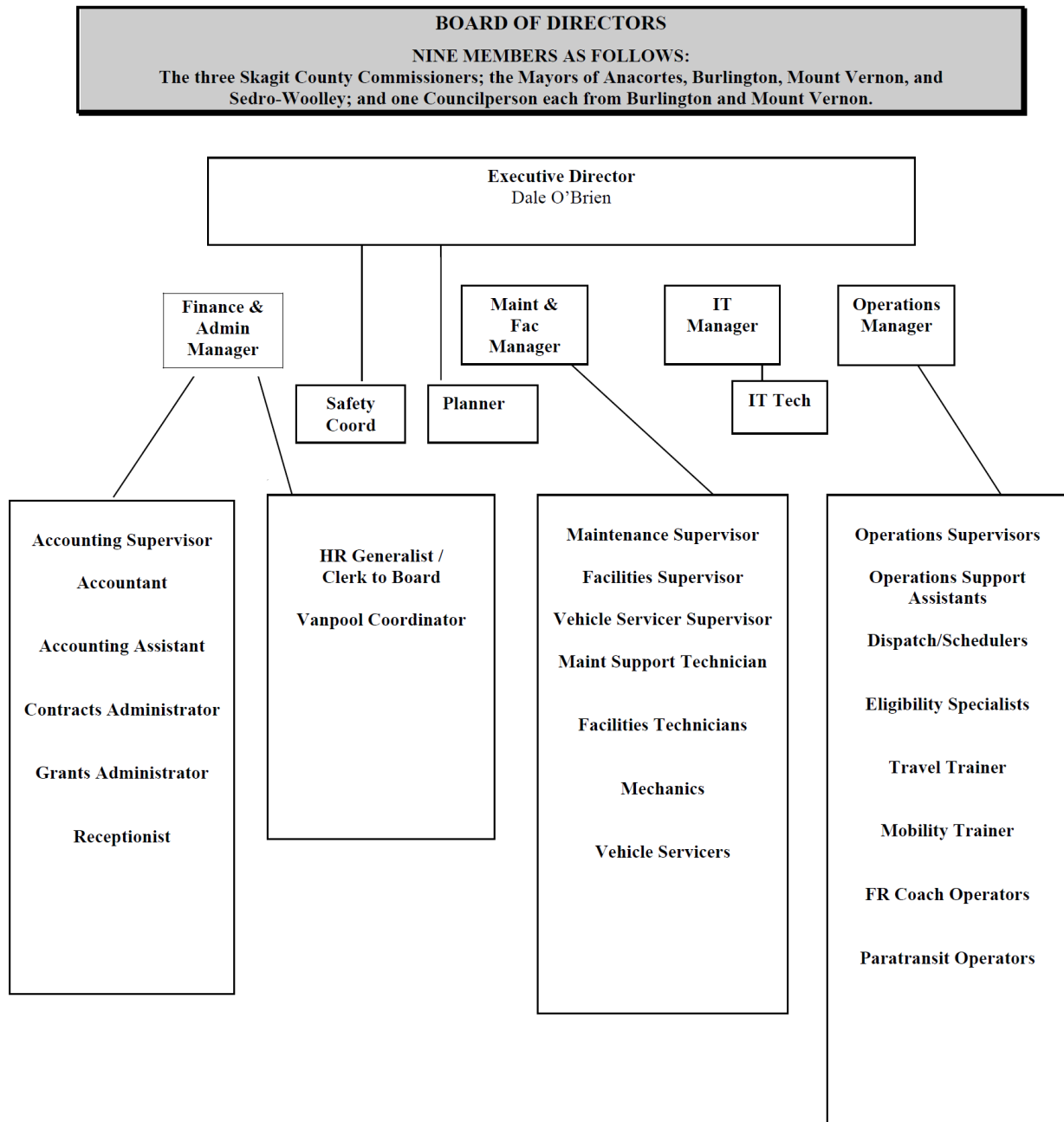
- Three Skagit County Commissioners,
- Mayor of Anacortes,
- Mayor of Burlington,
- Mayor of Mount Vernon,
- Mayor of Sedro Woolley,
- Councilperson from Burlington, and
- Councilperson from Mount Vernon.

The Board of Directors holds monthly public meetings on the 3rd Wednesday of each month.

Skagit Transit's organizational chart is shown on the next page. The number of employees at the end of calendar year 2015 was 121.

# Skagit Transit Organizational Chart

June 2016





## Section 2: Facilities

Skagit Transit has the following office and facility locations:

Maintenance, Operations and Administration (MOA) Office  
600 County Shop Lane  
Burlington, WA 98233

Skagit Station  
105 E. Kincaid Street  
Mount Vernon, WA 98273

New Maintenance, Operations and Administration (MOA) Construction Site  
11784 Bay Ridge Drive  
Burlington, WA 98233

Skagit Station is a multi-modal transportation facility owned and operated by Skagit Transit. Skagit Transit leases space to AMTRAK, Greyhound and to any private concessionaire wishing to operate the coffee shop.

Park and rides facilities maintained by Skagit Transit include:

1. Chuckanut Park and Ride, located near I-5 Exit 231 in north Burlington. This facility is owned by WSDOT and is operated by Skagit Transit. Skagit Transit is owner of the bus island and transfer station located at the Park and Ride.
2. March's Point Park and Ride, located near Anacortes off Highway 20 at Christianson Rd, the facility is owned by Skagit Transit, the land is leased through a long term lease agreement between Skagit Transit and Shell Oil Products, Inc.
3. South Mount Vernon Park and Ride, located in Mount Vernon just off I-5 on Old Highway 99, this facility is owned by Skagit Transit.
4. Alger Park and Ride, located in Alger just off I-5 at exit 240, this facility is owned by Skagit Transit.
5. Sedro-Woolley Park and Ride and Transfer Station, located near the convergence of Cook Road and Highway 20 in Sedro-Woolley.

## Section 3: Service Characteristics

Skagit Transit provides local fixed route service, commuter bus service, general public demand response service, ADA transit service, and a vanpool program.

### Fixed Route Service

Skagit Transit's fixed route service includes local routes, commuter routes, and flex routes. **In 2015, the number of all fixed route passenger boardings (local, commuter, and flex) decreased by 2.27% from 2014.**

Fixed route service is offered along a pattern of streets or routes, operating on a set schedule of pulses from Skagit Station, Chuckanut Park and Ride, March's Point Park and Ride, and other designated transfer locations including Skagit Valley College, 10th Street and Q Avenue in Anacortes, and the Sedro-Woolley Park and Ride.

In 2014 there were 19 fixed routes, including 12 local routes, two commuter routes and five flex/rural routes covering 322 miles of streets, roads, and highways. Local fixed routes operated between 5 and 7 days per week. Commuter routes operate between 5 and 6 days per week. Flex routes operate between 2 and 5 days per week.

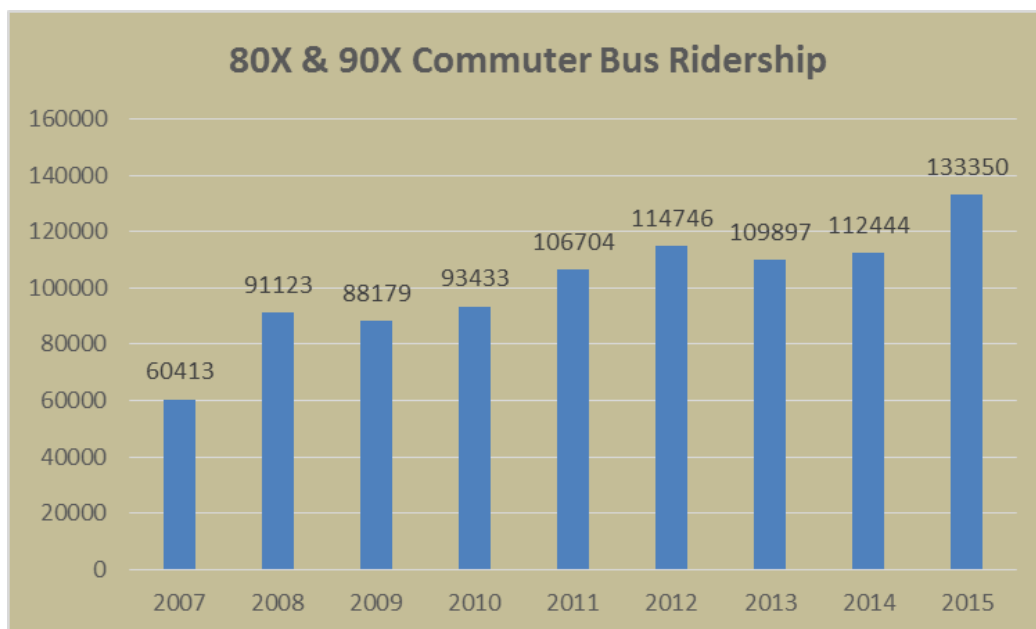
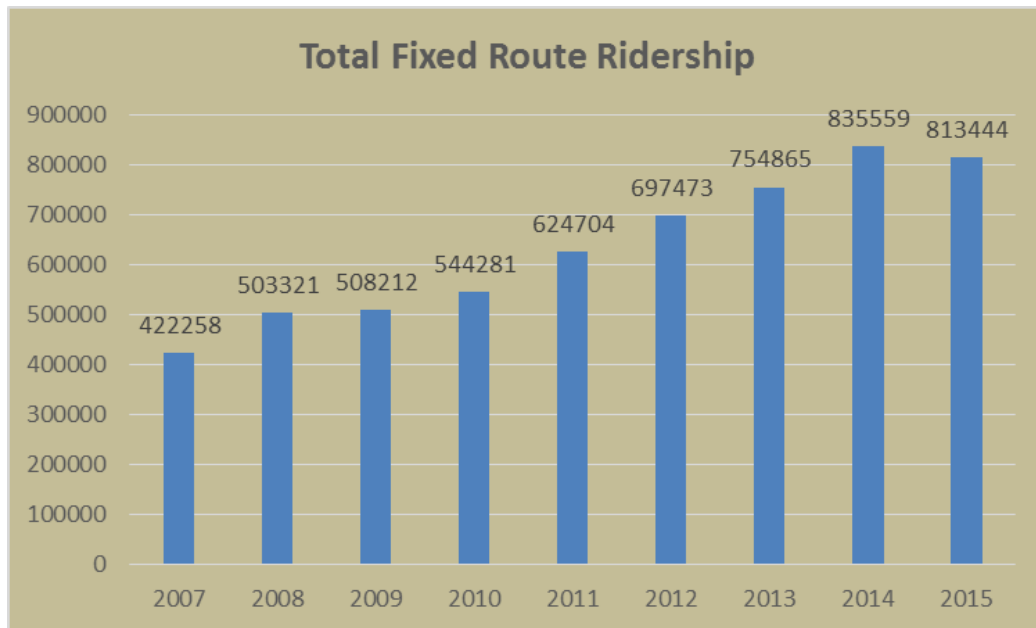
All Skagit Transit buses are accessible to persons with ADA requirements. All local fixed route buses have bike racks.

**Commuter Routes** - Commuter routes are a special category of fixed route service. In 2015, Skagit Transit operated three commuter bus routes, the 80X making express trips between Mt. Vernon and Bellingham, the 90X making express trips between Mt. Vernon and Everett, and the 40X making express trips between Anacortes and Mount Vernon. Commuter bus schedules feature longer stretches of closed-door service and limited stops. Commuter routes also feature peak commute hour scheduling. Whatcom Transportation Authority (WTA) and Skagit Transit jointly operate the 80X.

**General Public Demand Response Service** – This service is only offered in one area to provide service to a rural area of low demand. It is a pilot project to see if this type of service is utilized by the public and to gauge the cost effectiveness of offering such a service.

### 2014 vs 2015 Fixed Route Operating Statistics

	2014	2015	% Change
Passenger Trips	835,739	813,134	-2.27%
Revenue Miles	1,210,081	1,241,986	2.57%
Revenue Hours	67,718	68,993	1.88%



## ADA Transit

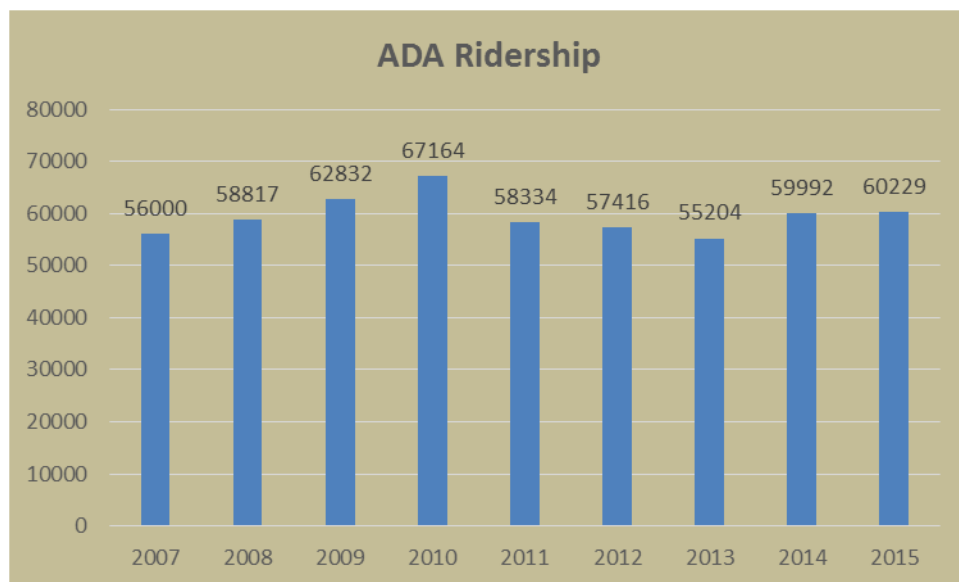
ADA Paratransit provides specialized transportation comparable with Skagit Transit's fixed-route bus service. **In 2015, ADA transit boardings decreased by 1.96% from 2014.**

Paratransit is a pre-scheduled service designed for people who are unable to get to the nearest bus stop or use a fixed-route bus. ADA transit is for individuals whose conditions and/or disabilities prevent them from using Skagit Transit's fixed-route buses. To become an ADA transit client, passengers go through an eligibility application and approval process. Curb-to-curb service is provided to most ADA clients within

the PTBA service area. Clients are required to call in advance of the trip and inform Skagit Transit of the origin, destination, and time of the trip. It is a shared ride service and clients may be required to remain onboard while other passengers are picked up and dropped off on the way to the rider's destination. ADA transit service operates during the same hours as the fixed routes line it compliments.

#### 2014 vs 2015 ADA Operating Statistics

	2014	2015	% Change
Passenger Trips	59,992	60,229	0.01%
Revenue Miles	281,524	293,958	4.42%
Revenue Hours	25,827	27,052	4.74%



#### Vanpool Program

The Vanpool Program is a service that allows people with long commutes to share the drive to work with others making the same or similar trip. In 2015, vanpool passenger trips increased by 1% from 2014. Skagit Transit currently has 50 active vans. A vanpool group consists of 5 to 15 individuals with a driver provided from within the vanpool group. Vanpool groups must either start or end their trip in Skagit County. Groups pay a monthly fee and a per mile charge. Skagit Transit maintains the van and provides fuel and insurance. In 2015, the cumulative sum of the distances ridden by each vanpool passenger totaled 5,751,202 miles. By far the largest number of vanpool users, 56%, are traveling to Snohomish County as Boeing employees. The vanpool program has a goal of increasing the number of vanpool groups by two to five per year, however forecasting demand for the service can be difficult because of variables such as gas prices, tolls, parking, and local employment trends.

## Fares

Current fares have been in place since October 1, 2008 and are as follows:

	REGULAR	YOUTH	REDUCED
Standard Fare	\$1.00	\$0.50	\$0.50
One-Day Pass (local)	\$2.00	\$1.00	\$1.00
31-Day Pass (local)	\$25.00	\$12.50	\$12.50
County Connectors (Commuter Service)	\$2.00	\$1.00	\$1.00
County Connector 31-Day Pass	\$50.00	\$25.00	\$25.00
ADA Transit	No Set Fare / By Donation		
Vanpool Fares	\$200 / Month / Vanpool + Mileage Costs (\$0.30 7-person van & \$0.38 12-15-person van)		

## Section 4: Service Connections

Skagit Transit provides services to the following public transportation facilities:

- Skagit Station, Mount Vernon
- Washington State Ferry Terminal & Guemes Island Ferry Terminal, Anacortes
- Alger Park and Ride, Alger
- Chuckanut Park and Ride, Burlington
- March's Point Park and Ride, Anacortes
- South Mount Vernon Park and Ride, Mount Vernon
- Sedro-Woolley Park and Ride
- Lincoln Creek Park and Ride, Bellingham
- Bellingham Station, Bellingham
- Everett Station, Everett

Skagit Transit provides connections to the following public transportation providers:

- AMTRAK trains – Skagit Station
- Greyhound Bus – Skagit Station
- Washington State Ferry, Anacortes
- Skagit County Guemes Ferry, Anacortes
- Island Transit – Skagit Station & March's Point Park & Ride, Anacortes
- Whatcom Transportation Authority – Skagit Station & Bellingham Station
- Everett Transit – Everett Station
- Community Transit – Everett Station
- Sound Transit – Sounder Train/Bus - Everett Station

Skagit Transit provides services convenient to most of the public schools within our service area including Skagit Valley College. Service is also provided to the hospitals in Anacortes, Mount Vernon and Sedro-Woolley as well as to important government centers such as the Skagit County Courthouse and city and town halls.

Through a partnership with Whatcom Transportation Authority a service connection is also provided to Western Washington University in Bellingham.

## Section 5: Planning Goals

The activities in Section 6 are action strategies that will contribute to the following transportation goals:

1. **Preservation.** Preserve and extend prior investments in existing transportation facilities and the services they provide to people and commerce.
2. **Safety.** Education, training and enforcement to save lives, reduce injuries and protect property.
3. **Stewardship.** To continuously improve the quality, effectiveness, and efficiency of the transportation system.
4. **Mobility.** To facilitate movement of local and commuting citizens to contribute to a strong economy and a better quality of life for Skagit County residents.
5. **Environmental Quality and Health.** To enhance regional quality of life through transportation investments that promote energy conservation, enhance healthy communities and protect the environment.

These goals are in line with the State's transportation goals:

1. **Economic vitality.** To promote and develop transportation systems that stimulate, support, and enhance the movement of people and goods to ensure a prosperous economy;
2. **Preservation.** To maintain, preserve, and extend the life and utility of prior investments in transportation systems and services;
3. **Safety.** To provide for and improve the safety and security of transportation customers and the transportation system;
4. **Mobility.** To improve the predictable movement of goods and people throughout Washington state;
5. **Environment.** To enhance Washington's quality of life through transportation investments that promote energy conservation, enhance healthy communities, and protect the environment; and
6. **Stewardship.** To continuously improve the quality, effectiveness, and efficiency of the transportation system.

## Section 6: Planned Activities, 2016-2021

Over the next six years, Skagit Transit aims to maintain efficient fixed route service, a growing vanpool program, and maintain ADA complementary transit service within three-quarters of a mile of local fixed routes. Skagit Transit also plans to modestly enhance and expand service into under-served, and unserved urban areas and to enhance service to rural areas where demand has surpassed the level of service provided.

The relocation of Skagit Transit's Maintenance, Operations, and Administrative Base (MOA) is the largest capital facilities project planned over the next six years. Based upon a recently completed Feasibility Study, Skagit Transit has purchased a former FedEx facility and some adjacent land for a new MOA facility. Over the next two to three years, Skagit Transit hopes to complete the redevelopment of this facility and to relocate all of its operations and equipment to this facility.

The following tables describe the planned activities to be undertaken by Skagit Transit from 2016 to 2021. These activities include the deployment of new transit service, the continuation and adjustment of existing service, plan development, MOA base relocation, and equipment purchases. Activities that occur by other entities but involve Skagit Transit funding contributions are noted as "ST Partner Project".

These tables include capital projects and service expansions that may require grant funding to complete. The timing of grant funds can be unpredictable. Project timelines may be pushed forward or back depending on grant availability. In the event that grant funding is not available or insufficient to complete a project, it will be reevaluated.



2016	Planned Activities
Planning	<ul style="list-style-type: none"> <li>• Transit Development Plan Update</li> <li>• Plan service enhancements to the County Connector services including adding a new route from Mount Vernon to Anacortes Ferry terminal</li> </ul>
Services	<ul style="list-style-type: none"> <li>• Preservation of existing service including Routes 80X and 90X</li> <li>• Increase ADA complimentary service levels</li> <li>• Introduce South Fidalgo Connector service for a 6 month pilot</li> <li>• Develop and implement a Community Van program to support populations with special transportation needs</li> </ul>
Facilities	<ul style="list-style-type: none"> <li>• Complete property acquisition for the MOA base relocation project (Phase I)</li> <li>• Begin Design and Engineering for MOA Base relocation project (Phase II)</li> <li>• Camera upgrades to improve safety and security at Skagit Station, the Park and Rides, and the MOA</li> <li>• Install bicycle parking at March's Point</li> <li>• Upgrade transformer at Skagit Station</li> <li>• Continue to improve ADA accessibility and overall passenger comfort at bus stops by adding and replacing passenger amenities such as seating, cover, lighting, landing pads, etc. as needed or requested</li> <li>• Upgrades to Skagit Station including: a wiring upgrade, conference room technology upgrades, and installing a new public announcement system</li> <li>• Retrofit Skagit Station with LED lighting</li> <li>• Retrofit the South Mount Vernon Park and Ride and Chuckanut Park and Ride with LED lighting</li> </ul>
Equipment	<ul style="list-style-type: none"> <li>• Complete outfitting of fixed route buses with the hardware and software for Streets and Next Stop Announcement Technology</li> <li>• Purchase two 35-foot buses to expand fleet for service expansions into under-served and unserved areas of East Mount Vernon and South Mount Vernon, Delivery in 1Q 2017 <b>(Expansion)</b></li> <li>• Purchase three 29-foot buses as replacements to maintain the rolling stock in a state of good repair, Delivery in 3Q 2017 <b>(Replacement)</b></li> <li>• Purchase two 25-foot propane powered ADA vehicles <b>(Expansion)</b></li> <li>• Replacement vehicle schedule on page 20</li> <li>• Purchase 5 new vanpool vehicles, Delivery in 2016 <b>(Expansion)</b></li> </ul>

2017	Planned Activities
Planning	<ul style="list-style-type: none"> <li>• Transit Development Plan Update</li> <li>• Plan service expansion into east Mount Vernon</li> <li>• Plan and design of bus stop upgrade program</li> <li>• Plan and design upgrade/replacement of current vehicle radio system</li> <li>• Plan service enhancements within and between the cities of Sedro-Woolley and Burlington</li> <li>• Create a Strategic Plan focused on the development and implementation of goals including service changes, infrastructure requirements, funding options, coordination with stakeholders, and public engagement</li> </ul>
Services	<ul style="list-style-type: none"> <li>• Preservation of existing service including Routes 80X and 90X.</li> <li>• Introduce upgrades to County Connector Services</li> <li>• Introduce upgrades to service in Sedro-Woolley and Burlington</li> <li>• Introduce upgrades to a Mount Vernon Route that will service Hwy 99 and the new County Jail as well as extend service further east into Mount Vernon <b>(Expansion)</b></li> </ul>
Facilities	<ul style="list-style-type: none"> <li>• Complete the Design and Engineering for MOA Base relocation project (Phase II)</li> <li>• Begin construction of MOA Base relocation project (Phase III)</li> <li>• Invest in alternative fuels infrastructure by purchasing and installing electric vehicle charging stations for Skagit Station (public use).</li> <li>• Continue to improve ADA accessibility and overall passenger comfort at bus stops by adding and replacing passenger amenities such as seating, cover, lighting, landing pads, etc. as needed or requested</li> <li>• Purchase 4 bus shelters</li> <li>• Complete retrofit of South Mount Vernon Park and Ride and Chuckanut Park and Ride with LED lighting</li> </ul>
Equipment	<ul style="list-style-type: none"> <li>• Replacement vehicle schedule on page 20</li> <li>• Purchase 3 new vanpool vehicles <b>(Expansion)</b></li> </ul>

<b>2018</b>	<b>Planned Activities</b>
Planning	<ul style="list-style-type: none"> <li>• Complete Transit Human Services Transportation Plan (<i>ST Partner Project</i>)</li> <li>• Transit Development Plan Update</li> <li>• Plan and design of bus stop upgrade program</li> <li>• Plan and design upgrade/replacement of current vehicle radio system</li> <li>• Title VI Program Update</li> </ul>
Services	<ul style="list-style-type: none"> <li>• Preservation of existing service</li> <li>• Introduce service into East Mount Vernon that will cover un-served areas including along Division Street (<b>Expansion</b>)</li> </ul>
Facilities	<ul style="list-style-type: none"> <li>• Complete construction for MOA Base relocation project (Phase III)</li> <li>• Continue to improve ADA accessibility and overall passenger comfort at bus stops by adding and replacing passenger amenities such as seating, cover, lighting, landing pads, etc.</li> </ul>
Equipment	<ul style="list-style-type: none"> <li>• Replacement vehicle schedule on page 20</li> <li>• Purchase 3 new vanpool vehicles (<b>Expansion</b>)</li> </ul>

<b>2019</b>	<b>Planned Activities</b>
Planning	<ul style="list-style-type: none"> <li>• Transit Development Plan Update</li> </ul>
Services	<ul style="list-style-type: none"> <li>• Preservation of existing service including</li> </ul>
Facilities	<ul style="list-style-type: none"> <li>• Continue to improve ADA accessibility and overall passenger comfort at bus stops by adding and replacing passenger amenities such as seating, cover, lighting, landing pads, etc.</li> <li>• Add pedestrian canopy and information kiosk on bus island at Skagit Station</li> </ul>
Equipment	<ul style="list-style-type: none"> <li>• Replacement vehicle schedule on page 20</li> <li>• Purchase 5 new vanpool vehicles (<b>Expansion</b>)</li> </ul>

<b>2020</b>	<b>Planned Activities</b>
Planning	<ul style="list-style-type: none"> <li>• Transit Development Plan Update</li> </ul>
Services	<ul style="list-style-type: none"> <li>• Preservation of existing service</li> </ul>
Facilities	<ul style="list-style-type: none"> <li>• Continue to improve ADA accessibility and overall passenger comfort at bus stops by adding and replacing passenger amenities such as seating, cover, lighting, landing pads, etc.</li> </ul>
Equipment	<ul style="list-style-type: none"> <li>• Replacement vehicle schedule on page 20</li> <li>• Purchase 5 new vanpool vehicles (<b>Expansion</b>)</li> </ul>

<b>2021</b>	<b>Planned Activities</b>
Planning	<ul style="list-style-type: none"> <li>Transit Development Plan Update</li> </ul>
Services	<ul style="list-style-type: none"> <li>Preservation of existing service</li> </ul>
Facilities	<ul style="list-style-type: none"> <li>Continue to improve ADA accessibility and overall passenger comfort at bus stops by adding and replacing passenger amenities such as seating, cover, lighting, landing pads, etc.</li> </ul>
Equipment	<ul style="list-style-type: none"> <li>Replacement vehicle schedule on page 20</li> <li>Purchase 5 new vanpool vehicles (<b>Expansion</b>)</li> </ul>

<b>SUMMARY: VEHICLE EXPANSION AND PRESERVATION 2016-2021</b>			
<b>Year</b>	<b>Type</b>	<b>Expansion (Quantity)</b>	<b>Replacement (Quantity)</b>
<b>2016</b>	Fixed Route	2	3
	Paratransit	3	2
	Vanpool	5	3
	Support	0	1
<b>2017</b>	Fixed Route	0	0
	Paratransit	0	7
	Vanpool	3	5
	Support	0	1
<b>2018</b>	Fixed Route	0	5
	Paratransit	0	3
	Vanpool	3	5
	Support	0	3
<b>2019</b>	Fixed Route	0	6
	Paratransit	0	5
	Vanpool	5	5
	Support	0	3
<b>2020</b>	Fixed Route	0	5
	Paratransit	0	0
	Vanpool	5	5
	Support	0	2
<b>2021</b>	Fixed Route	0	5
	Paratransit	0	3
	Vanpool	5	5
	Support	0	0

## Section 7: Capital Improvement Program 2016-2021

The Capital Improvement Program includes the capital expenses identified in Section 9. However, while the program below shows the entire cost of the MOA Relocation Project, Section 9 Financial Tables only reflect the anticipated 20% local match. Grant funds will actively be sought to cover the remaining costs of design, engineering, and construction. In the event that grant funding is not available or insufficient to complete this project within the next six years, timelines for completion will be re-evaluated.

SECTION 7: CAPITAL IMPROVEMENT PROGRAM 2016-2021						
<b>Preservation</b>	<b>2016</b>	<b>2017</b>	<b>2018</b>	<b>2019</b>	<b>2020</b>	<b>2021</b>
Maint/Admin equip/facility	\$ 113,000	\$ 118,650	\$ 124,583	\$ 130,812	\$ 137,352	\$ 144,220
Dial-a-ride vehicles	\$ 220,000	\$ 808,500	\$ 363,825	\$ 127,339		\$ 421,173
Service vehicles	\$ 37,000	\$ 38,850	\$ 122,378	\$ 128,496	\$ 89,947	
Transit Centers						
Transit Shelters		\$ 15,000				
Transit buses	\$ 1,210,197		\$ 889,495	\$ 1,867,939	\$ 1,961,336	\$1,544,552
Vanpool vans	\$ 87,702	\$ 153,479	\$ 161,152	\$ 169,210	\$ 177,671	\$ 186,554
Subtotals	\$ 1,667,899	\$ 1,134,479	\$ 1,661,433	\$ 2,423,796	\$ 2,366,306	\$2,296,499
<b>Expansion</b>	<b>2016</b>	<b>2017</b>	<b>2018</b>	<b>2019</b>	<b>2020</b>	<b>2020</b>
Maint/Admin equip/facility						-
Dial-a-ride vehicles	\$ 330,000					-
Service vehicles						-
Transit Centers	\$ 1,148,000	\$ 8,000,000	\$ 2,000,000			-
Transit Shelters						-
Transit buses	\$ 806,798					-
Vanpool vans	\$ 146,170	\$ 92,087	\$ 96,691	\$ 169,210	\$ 177,671	\$ 186,554
Subtotals	\$ 2,430,968	\$ 8,092,087	\$ 2,096,691	\$ 169,210	\$ 177,671	\$ 186,554
<b>Total Capital</b>	<b>\$ 4,098,867</b>	<b>\$ 9,226,566</b>	<b>\$ 3,758,124</b>	<b>\$ 2,593,006</b>	<b>\$ 2,543,977</b>	<b>\$2,483,053</b>
	The Capital Improvement Program, 2016-2021 includes all capital expenses in the plan.					
	Please note: Grant funds will be sought for all capital construction projects. In the event grant funding is not available or insufficient to complete the capital construction project, a reevaluation of the project will be performed.					

## Section 8: Operating Data

OPERATING DATA 2016-2021							
(All figures, except 2015, in thousands of units)							
<b>Fixed Routes</b>	<b>2015</b>	<b>2016</b>	<b>2017</b>	<b>2018</b>	<b>2019</b>	<b>2020</b>	<b>2021</b>
Vehicle hours	64,332	60	67	75	75	75	75
Vehicle revenue hours	61,157	57	64	71	71	71	71
Vehicle miles	1,035,552	972	1085	1215	1215	1215	1215
Vehicle revenue miles	969,421	923	1037	1150	1150	1150	1150
Passenger trips	680,094	612	656	704	718	732	747
Fatalities	0						
Reportable injuries	0						
Collisions	2						
Diesel fuel consumed	155,381	156	175	196	196	196	196
<b>Commuter Routes</b>	<b>2015</b>	<b>2016</b>	<b>2017</b>	<b>2018</b>	<b>2019</b>	<b>2020</b>	<b>2021</b>
Vehicle hours	8,382	12	16	20	20	20	20
Vehicle revenue hours	7,835	11	15	18	18	18	18
Vehicle miles	281,785	360	490	613	613	613	613
Vehicle revenue miles	272,565	340	462	578	578	578	578
Passenger trips	133,350	120	150	180	184	187	191
Fatalities	0						
Reportable injuries	0						
Collisions	0						
Diesel fuel consumed	52,384	67	89	111	111	111	111
<b>ADA Demand Response</b>	<b>2015</b>	<b>2016</b>	<b>2017</b>	<b>2018</b>	<b>2019</b>	<b>2020</b>	<b>2021</b>
Vehicle hours	29,020	33	35	37	40	42	45
Vehicle revenue hours	27,052	30	32	35	37	39	42
Vehicle miles	341,112	397	424	452	482	515	549
Vehicle revenue miles	293,958	337	359	383	409	436	465
Passenger trips	60,229	67	71	76	81	87	93
Fatalities	0						
Reportable injuries	0						
Collisions	0						
Diesel fuel consumed	36,115	41	44	47	50	53	57
<b>Vanpools</b>	<b>2015</b>	<b>2016</b>	<b>2017</b>	<b>2018</b>	<b>2019</b>	<b>2020</b>	<b>2021</b>
Vehicle hours	29,909	30	31	32	32	33	34
Vehicle revenue hours	29,440	30	30	31	32	32	33
Vehicle miles	1,126,682	1107	1129	1152	1175	1199	1222
Vehicle revenue miles	1,109,649	1088	1110	1132	1154	1177	1201
Passenger trips	128,929	130	133	136	138	141	144
Fatalities	0						
Reportable injuries	0						
Collisions	0						
Gasoline consumed	63,006	63	64	66	67	68	70

## Section 9: Operating Revenues and Expenditures 2016-2021

	2016		
	General Fund	Capital Fund	Total
<b>Beginning Cash Balance January 1st.</b>	\$ 8,348,210	\$ 4,262,852	\$ 12,611,062
<b>Operating Revenues</b>			-
Sales Tax (transit portion)	9,376,763	-	9,376,763
Fares	505,000	-	505,000
Van Pools	480,000	-	480,000
Federal Operating Grants	1,847,561	-	1,847,561
State Operating Grants	504,270	-	504,270
Other Grants	3,460	-	3,460
Other Revenues	34,000	-	34,000
Transfers	(2,334,264)	2,334,264	-
<b>Total Operating Revenues</b>	<b>10,416,790</b>	<b>2,334,264</b>	<b>12,751,054</b>
<b>Subtotal Available</b>	<b>18,765,000</b>	<b>6,597,116</b>	<b>25,362,116</b>
<b>Operating Expenses</b>			
Vanpool P&M	775,858	-	775,858
Vanpool Sys Expand		-	-
Fixed Route P&M	7,253,547	-	7,253,547
Fixed Route Sys Expand		-	-
Dial-a-Ride (ADA) P&M	4,463,735	-	4,463,735
Dial-a-Ride (ADA) Expand		-	-
Other		-	-
Annual Depreciation	1,200,000	(1,200,000)	-
<b>Total Operating Expenses</b>	<b>13,693,140</b>	<b>(1,200,000)</b>	<b>12,493,140</b>
<b>Net Cash Available</b>	<b>5,071,860</b>	<b>7,797,116</b>	<b>12,868,976</b>
<b>Capital Revenues</b>			
Federal Grants	-	1,148,319	1,148,319
Federal 5309 Grants	-		-
Federal 5310 Grants	-		-
Federal 5311 Grants	-		-
Federal 5313 Grants	-		-
State Grants	-	989,930	989,930
Other	-	-	-
Fund Transfers (Matching & Non-Grant)			-
<b>Subtotal Capital Revenue</b>	<b>-</b>	<b>2,138,249</b>	<b>2,138,249</b>
<b>Capital Expenditures</b>			
System P&M			
Maintenance & Other Equipment	-	113,000	113,000
FixedRoute	-	1,210,197	1,210,197
Dial-a-Ride	-	220,000	220,000
Service/Staff Vehicles	-	37,000	37,000
Transit Center	-		-
Transit Shelters	-		-
Vanpool Vans	-	87,702	87,702
System Expansion			-
Maintenance & Other Equipment	-		-
Dial-a-Ride	-	330,000	330,000
FixedRoute	-	806,798	806,798
Service/Staff Vehicles	-		-
Transit Center	-	1,148,000	1,148,000
Transit Shelters	-		-
Transit Buses	-		-
Vanpool Vans		146,170	146,170
<b>Subtotal Capital Obligations</b>	<b>-</b>	<b>4,098,867</b>	<b>4,098,867</b>
<b>Ending Cash Balance 12/31</b>	<b>\$ 5,071,860</b>	<b>\$ 5,836,498</b>	<b>\$ 10,908,358</b>

	2017		
	General Fund	Capital Fund	Total
<b>Beginning Cash Balance January 1st.</b>	\$ 5,071,860	\$ 5,836,498	\$ 10,908,358
<b>Operating Revenues</b>			-
Sales Tax (transit portion)	9,845,601	-	9,845,601
Fares	520,150	-	520,150
Van Pools	489,600	-	489,600
Federal Operating Grants	1,902,988	-	1,902,988
State Operating Grants	529,484	-	529,484
Other Grants	2,500	-	2,500
Other Revenues	34,680	-	34,680
Transfers	-	-	-
<b>Total Operating Revenues</b>	<b>13,325,002</b>	<b>-</b>	<b>13,325,002</b>
<b>Subtotal Available</b>	18,396,862	5,836,498	24,233,360
<b>Operating Expenses</b>			
Vanpool P&M	814,651	-	814,651
Vanpool Sys Expand	-	-	-
Fixed Route P&M	7,616,224		7,616,224
Fixed Route Sys Expand	570,000		570,000
Dial-a-Ride (ADA) P&M	4,686,922	-	4,686,922
Dial-a-Ride (ADA) Expand	-	-	-
Other	-	-	-
Annual Depreciation	1,300,000	(1,300,000)	-
<b>Total Operating Expenses</b>	<b>14,987,797</b>	<b>(1,300,000)</b>	<b>13,687,797</b>
<b>Net Cash Available</b>	<b>3,409,065</b>	<b>7,136,498</b>	<b>10,545,563</b>
<b>Capital Revenues</b>			
Federal Grants	-	8,000,000	8,000,000
Federal 5309 Grants	-	-	-
Federal 5310 Grants	-	-	-
Federal 5311 Grants	-	-	-
Federal 5313 Grants	-	-	-
State Grants	-	82,878	82,878
Other	-	-	-
Fund Transfers (Matching & Non-Grant)	-	-	-
<b>Subtotal Capital Revenue</b>	<b>-</b>	<b>8,082,878</b>	<b>8,082,878</b>
<b>Capital Expenditures</b>			
System P&M			
Maintenance & Other Equipment	-	118,650	118,650
FixedRoute	-		-
Dial-a-Ride	-	808,500	808,500
Service/Staff Vehicles	-	38,850	38,850
Transit Center	-		-
Transit Shelters	-	15,000	15,000
Vanpool Vans	-	153,479	153,479
System Expansion			
Maintenance & Other Equipment	-		-
Dial-a-Ride	-		-
FixedRoute	-		-
Service/Staff Vehicles	-		-
Transit Center	-	8,000,000	8,000,000
Transit Shelters	-		-
Transit Buses	-		-
Vanpool Vans	-	92,087	92,087
<b>Subtotal Capital Obligations</b>	<b>-</b>	<b>9,226,566</b>	<b>9,226,566</b>
<b>Ending Cash Balance 12/31</b>	<b>\$ 3,409,065</b>	<b>\$ 5,992,811</b>	<b>\$ 9,401,876</b>



	2018		
	General Fund	Capital Fund	Total
<b>Beginning Cash Balance January 1st.</b>	<b>\$ 3,409,065</b>	<b>\$ 5,992,811</b>	<b>\$ 9,401,876</b>
<b>Operating Revenues</b>			-
Sales Tax (transit portion)	10,337,881	-	10,337,881
Fares	535,755	-	535,755
Van Pools	514,080	-	514,080
Federal Operating Grants	1,960,077	-	1,960,077
State Operating Grants	540,073	-	540,073
Other Grants	2,500	-	2,500
Other Revenues	35,374	-	35,374
Transfers	-	-	-
<b>Total Operating Revenues</b>	<b>13,925,740</b>	<b>-</b>	<b>13,925,740</b>
<b>Subtotal Available</b>	<b>17,334,805</b>	<b>5,992,811</b>	<b>23,327,616</b>
<b>Operating Expenses</b>			
Vanpool P&M	839,090	-	839,090
Vanpool Sys Expand	-	-	-
Fixed Route P&M	7,844,711	-	7,844,711
Fixed Route Sys Expand	-	-	-
Dial-a-Ride (ADA) P&M	4,827,530	-	4,827,530
Dial-a-Ride (ADA) Expand	-	-	-
Other	-	-	-
Annual Depreciation	1,300,000	(1,300,000)	-
<b>Total Operating Expenses</b>	<b>14,811,331</b>	<b>(1,300,000)</b>	<b>13,511,331</b>
<b>Net Cash Available</b>	<b>2,523,475</b>	<b>7,292,811</b>	<b>9,816,285</b>
<b>Capital Revenues</b>			
Federal Grants	-	2,000,000	2,000,000
Federal 5309 Grants	-	-	-
Federal 5310 Grants	-	-	-
Federal 5311 Grants	-	-	-
Federal 5313 Grants	-	-	-
State Grants	-	87,022	87,022
Other	-	-	-
Fund Transfers (Matching & Non-Grant)	-	-	-
<b>Subtotal Capital Revenue</b>	<b>-</b>	<b>2,087,022</b>	<b>2,087,022</b>
<b>Capital Expenditures</b>			
System P&M			
Maintenance & Other Equipment	-	124,583	124,583
FixedRoute	-	889,495	889,495
Dial-a-Ride	-	363,825	363,825
Service/Staff Vehicles	-	122,378	122,378
Transit Center	-	-	-
Transit Shelters	-	-	-
Vanpool Vans	-	161,152	161,152
System Expansion			
Maintenance & Other Equipment	-	-	-
Dial-a-Ride	-	-	-
FixedRoute	-	-	-
Service/Staff Vehicles	-	-	-
Transit Center	-	2,000,000	2,000,000
Transit Shelters	-	-	-
Transit Buses	-	-	-
Vanpool Vans	-	96,691	96,691
<b>Subtotal Capital Obligations</b>	<b>-</b>	<b>3,758,124</b>	<b>3,758,124</b>
<b>Ending Cash Balance 12/31</b>	<b>\$ 2,523,475</b>	<b>\$ 5,621,709</b>	<b>\$ 8,145,184</b>

	2019		
	General Fund	Capital Fund	Total
<b>Beginning Cash Balance January 1st.</b>	\$ 2,523,475	\$ 5,621,709	\$ 8,145,184
<b>Operating Revenues</b>			-
Sales Tax (transit portion)	10,854,775	-	10,854,775
Fares	551,827	-	551,827
Van Pools	529,502	-	529,502
Federal Operating Grants	2,018,880	-	2,018,880
State Operating Grants	550,875	-	550,875
Other Grants	2,500	-	2,500
Other Revenues	36,081	-	36,081
Transfers	-	-	-
<b>Total Operating Revenues</b>	<b>14,544,440</b>	<b>-</b>	<b>14,544,440</b>
<b>Subtotal Available</b>	<b>17,067,915</b>	<b>5,621,709</b>	<b>22,689,624</b>
<b>Operating Expenses</b>			
Vanpool P&M	864,263	-	864,263
Vanpool Sys Expand	-	-	-
Fixed Route P&M	8,080,053	-	8,080,053
Fixed Route Sys Expand	-	-	-
Dial-a-Ride (ADA) P&M	4,972,355	-	4,972,355
Dial-a-Ride (ADA) Expand	-	-	-
Other	-	-	-
Annual Depreciation	1,300,000	(1,300,000)	-
<b>Total Operating Expenses</b>	<b>15,216,671</b>	<b>(1,300,000)</b>	<b>13,916,671</b>
<b>Net Cash Available</b>	<b>1,851,244</b>	<b>6,921,709</b>	<b>8,772,953</b>
<b>Capital Revenues</b>			
Federal Grants	-	-	-
Federal 5309 Grants	-	-	-
Federal 5310 Grants	-	-	-
Federal 5311 Grants	-	-	-
Federal 5313 Grants	-	-	-
State Grants	-	152,289	152,289
Other	-	-	-
Fund Transfers (Matching & Non-Grant)	-	-	-
<b>Subtotal Capital Revenue</b>	<b>-</b>	<b>152,289</b>	<b>152,289</b>
<b>Capital Expenditures</b>			
System P&M			
Maintenance & Other Equipment	-	130,812	130,812
FixedRoute	-	1,867,939	1,867,939
Dial-a-Ride	-	127,339	127,339
Service/Staff Vehicles	-	128,496	128,496
Transit Center	-	-	-
Transit Shelters	-	-	-
Vanpool Vans	-	169,210	169,210
System Expansion			
Maintenance & Other Equipment	-	-	-
Dial-a-Ride	-	-	-
FixedRoute	-	-	-
Service/Staff Vehicles	-	-	-
Transit Center	-	-	-
Transit Shelters	-	-	-
Transit Buses	-	-	-
Vanpool Vans	-	169,210	169,210
<b>Subtotal Capital Obligations</b>	<b>-</b>	<b>2,593,006</b>	<b>2,593,006</b>
<b>Ending Cash Balance 12/31</b>	<b>\$ 1,851,244</b>	<b>\$ 4,480,993</b>	<b>\$ 6,332,237</b>

	2020		
	General Fund	Capital Fund	Total
<b>Beginning Cash Balance January 1st.</b>	\$ 1,851,244	\$ 4,480,993	\$ 6,332,237
<b>Operating Revenues</b>			-
Sales Tax (transit portion)	11,397,514	-	11,397,514
Fares	568,382	-	568,382
Van Pools	545,387	-	545,387
Federal Operating Grants	2,079,446	-	2,079,446
State Operating Grants	561,892	-	561,892
Other Grants	2,500	-	2,500
Other Revenues	36,803	-	36,803
Transfers	-	-	-
<b>Total Operating Revenues</b>	<b>15,191,924</b>	<b>-</b>	<b>15,191,924</b>
<b>Subtotal Available</b>	17,043,168	4,480,993	21,524,161
<b>Operating Expenses</b>			
Vanpool P&M	890,191	-	890,191
Vanpool Sys Expand	-	-	-
Fixed Route P&M	8,322,454	-	8,322,454
Fixed Route Sys Expand	-	-	-
Dial-a-Ride (ADA) P&M	5,121,526	-	5,121,526
Dial-a-Ride (ADA) Expand	-	-	-
Other	-	-	-
Annual Depreciation	1,300,000	(1,300,000)	-
<b>Total Operating Expenses</b>	<b>15,634,171</b>	<b>(1,300,000)</b>	<b>14,334,171</b>
<b>Net Cash Available</b>	<b>1,408,997</b>	<b>5,780,993</b>	<b>7,189,990</b>
<b>Capital Revenues</b>			
Federal Grants	-	-	-
Federal 5309 Grants	-	-	-
Federal 5310 Grants	-	-	-
Federal 5311 Grants	-	-	-
Federal 5313 Grants	-	-	-
State Grants	-	159,903	159,903
Other	-	-	-
Fund Transfers (Matching & Non-Grant)	-	-	-
<b>Subtotal Capital Revenue</b>	<b>-</b>	<b>159,903</b>	<b>159,903</b>
<b>Capital Expenditures</b>			
System P&M			
Maintenance & Other Equipment	-	137,352	137,352
FixedRoute	-	1,961,336	1,961,336
Dial-a-Ride	-	-	-
Service/Staff Vehicles	-	89,947	89,947
Transit Center	-	-	-
Transit Shelters	-	-	-
Vanpool Vans	-	177,671	177,671
System Expansion			
Maintenance & Other Equipment	-	-	-
Dial-a-Ride	-	-	-
FixedRoute	-	-	-
Service/Staff Vehicles	-	-	-
Transit Center	-	-	-
Transit Shelters	-	-	-
Transit Buses	-	-	-
Vanpool Vans	-	177,671	177,671
<b>Subtotal Capital Obligations</b>	<b>-</b>	<b>2,543,977</b>	<b>2,543,977</b>
<b>Ending Cash Balance 12/31</b>	<b>\$ 1,408,997</b>	<b>\$ 3,396,919</b>	<b>\$ 4,805,917</b>

	2021		
	General Fund	Capital Fund	Total
<b>Beginning Cash Balance January 1st.</b>	\$ 1,408,997	\$ 3,396,919	\$ 4,805,917
<b>Operating Revenues</b>			-
Sales Tax (transit portion)	11,967,390	-	11,967,390
Fares	585,433	-	585,433
Van Pools	561,749	-	561,749
Federal Operating Grants	2,141,830	-	2,141,830
State Operating Grants	573,130	-	573,130
Other Grants	2,500	-	2,500
Other Revenues	37,539	-	37,539
Transfers	-	-	-
<b>Total Operating Revenues</b>	<b>15,869,571</b>	<b>-</b>	<b>15,869,571</b>
<b>Subtotal Available</b>	<b>17,278,568</b>	<b>3,396,919</b>	<b>20,675,487</b>
<b>Operating Expenses</b>			
Vanpool P&M	916,896	-	916,896
Vanpool Sys Expand	-	-	-
Fixed Route P&M	8,572,128	-	8,572,128
Fixed Route Sys Expand	-	-	-
Dial-a-Ride (ADA) P&M	5,275,172	-	5,275,172
Dial-a-Ride (ADA) Expand	-	-	-
Other	-	-	-
Annual Depreciation	1,300,000	(1,300,000)	-
<b>Total Operating Expenses</b>	<b>16,064,196</b>	<b>(1,300,000)</b>	<b>14,764,196</b>
<b>Net Cash Available</b>	<b>1,214,372</b>	<b>4,696,919</b>	<b>5,911,291</b>
<b>Capital Revenues</b>			
Federal Grants	-	-	-
Federal 5309 Grants	-	-	-
Federal 5310 Grants	-	-	-
Federal 5311 Grants	-	-	-
Federal 5313 Grants	-	-	-
State Grants	-	167,899	167,899
Other	-	-	-
Fund Transfers (Matching & Non-Grant)	-	-	-
<b>Subtotal Capital Revenue</b>	<b>-</b>	<b>167,899</b>	<b>167,899</b>
<b>Capital Expenditures</b>			
System P&M			
Maintenance & Other Equipment	-	144,220	144,220
FixedRoute	-	1,544,552	1,544,552
Dial-a-Ride	-	421,173	421,173
Service/Staff Vehicles	-	-	-
Transit Center	-	-	-
Transit Shelters	-	-	-
Vanpool Vans	-	186,554	186,554
System Expansion			
Maintenance & Other Equipment	-	-	-
Dial-a-Ride	-	-	-
FixedRoute	-	-	-
Service/Staff Vehicles	-	-	-
Transit Center	-	-	-
Transit Shelters	-	-	-
Transit Buses	-	-	-
Vanpool Vans	-	186,554	186,554
<b>Subtotal Capital Obligations</b>	<b>-</b>	<b>2,483,053</b>	<b>2,483,053</b>
<b>Ending Cash Balance 12/31</b>	<b>\$ 1,214,372</b>	<b>\$ 2,381,765</b>	<b>\$ 3,596,137</b>

## Appendix A - Public Participation Process

**Public Comment Period:** July 19-August 17, 2016. Submit comments to:

bwindler@skagittransit.org

Skagit Transit  
c/o Planner  
600 County Shop Ln  
Burlington, WA 98233

**Public hearing:** Skagit Transit held a public hearing on the Transit Development Plan. The public hearing was held on August 20, at 1:00PM at the Burlington City Hall Council Chambers, 833 S Spruce St, Burlington, WA 98233.

**Posted to Website:** No Later than July 19, 2016, <http://www.skagittransit.org/news/>

**Public Notices Published:** Skagit Valley Herald (no later than July 19, 2016) and El Mundo (no later than July 19, 2016)

**Requests for Paper or Digital Copies:** On and after July 19, 2016, anyone may request a paper or digital copy of the TDP by emailing bwindler@skagittransit.org or calling 360-757-8801.

**Available to the Public for Review:** On and after July 19, 2016, the public can view a copy of the draft TDP at one of the following locations.

Skagit Station  
Customer Service Counter  
105 E. Kincaid Street  
Mount Vernon, WA 98273

Maintenance, Operations and Administration (MOA) Office  
Reception  
600 County Shop Lane  
Burlington, WA 98233

## Appendix B – Public Transportation Management System Inventory

**Public Transportation Management System  
Owned Rolling Stock Inventory & Verification of Continued Use**

**Agency/ Organization:**

Skagit Transit

**Date:** December 31, 2015

*Signature and Title*

Facilities & Maintenance Manager

*Date*

*I hereby certify that all information reported in the inventories reflects true, accurate and complete information for the agency/organization listed and that project equipment purchased through a state or federal grant agreement is still being used in accordance with the terms and conditions of the grant agreement.*

No.	Year	Make/Model	Vehicle Code	Vehicle Identification Number (VIN)	Agency Vehicle Number	Actual/Life Odometer	Condition (points)	Age (years)	Remaining Useful Life (years)	Replacement Cost \$	ADA Access (yes/no)	Seating Capacity	Fuel Type	WSDOT Title (yes/no)	Notes
1.	2015	Chevy/ARBOC	11	1GB6G5BL2E1198564	151	39,817	90	0	5	\$182,000	Yes	17+2	D	No	
2	2015	Chevy/ARBOC	11	1GB6G5BL2E1199325	152	33,478	90	0	5	\$182,000	Yes	17+2	D	Yes	
3	2013	Dodge/Caravan	13	2C4RDGCG6DR761012	1017	43,705	80	2	2	\$24,500	No	7	G	Yes	
4	2013	Dodge/Caravan	13	2C4RDGCG6DR761013	1018	30,004	80	2	2	\$24,500	No	7	G	Yes	
5	2015	Chev/StarTrans Senator	11	1GB6G5BL2E1158200	759	8,701	90	0	5	\$109,000	Yes	10+4	D	Yes	
6	2015	Chev/StarTrans Senator	11	1GB6G5BL2E1158448	760	10,937	90	0	5	\$109,000	Yes	10+4	D	No	
7	2008	Chev/StarTrans Senator	11	1GBJG316781221108	737	165,154	80	7	0	\$85,674	Yes	14+4	D	No	
8	2008	Chev/StarTrans Senator	11	1GBJG316X81210796	738	199,235	80	7	0	\$85,674	Yes	14+4	D	No	
9	2007	Chev/Uplander	13	1GNDV33W97D207677	816	118,052	80	8	0	\$22,000	No	7	G	No	
10	2007	Chev/Uplander	13	1GNDV33W57D208177	817	116,933	80	8	0	\$22,000	No	7	G	No	
11	2007	Chev/Uplander	13	1GNDV33W27D208685	819	111,677	80	8	0	\$22,000	No	7	G	No	
12	2013	Toyota/Prius	28	JTDZNBFL4D3273985	932	11,193	80	2	2	\$27,550	No	4	G/E	No	
13.	2014	Chev/Express 15	13	1GAZG1FC2E1115545	894	72,285	80	1	3	\$27,600	No	15	G	No	
14.	2014	Cilling/Low Floor	01	15GCD2713E1183921	141	94,179	90	1	11	\$443,625	Yes	36+2	D	No	
15.	2014	Cilling/Low Floor	01	15GCD2715E1183922	142	103,285	90	1	11	\$443,625	Yes	36+2	D	No	
16.	2014	Cilling/Low Floor	02	15GCD2711E1183923	143	76,183	90	1	11	\$418,762	Yes	32+2	D	No	
17.	2014	Cilling/Low Floor	02	15GCD2713E1183924	144	73,742	90	1	11	\$418,762	Yes	32+2	D	No	
18.	2014	Ford/Escape	28	1FMCU9GX1EUE28535	934	12,298	90	1	3	\$24,944	No	5	G	No	prev odom 24,944 as prev. listed
19.	2015	Ford/Escape	28	1FMCU9GX3FU26436	935	2,027	90	1	3	\$24,268	No	5	G	No	prev odom 24,268 as prev. listed

**Public Transportation Management System  
Owned Rolling Stock Inventory & Verification of Continued Use**

No.	Year	Make/Model	Vehicle Code	Vehicle Identification Number (VIN)	Agency Vehicle Number	Actual/Life Odometer	Condition (points)	Age (years)	Remaining Useful Life (years)	Replacement Cost \$	ADA Access (yes/no)	Seating Capacity	Fuel Type	WSDOT Title (yes/no)	Notes
20.	2008	Chev/Uplander	13	1GNIDV23W58D164760	821	91,155	80	7	0	\$20,171	No	7	G	No	
21.	2008	Chev/Express 12	28	1GAHCG35K281189677	937	122,817	80	7	0	\$22,759	No	12	G	No	
22.	2015	Chev/StarTrans/Senator	11	1GB6G5BL9E1157249	761	8,509	90	0	5	\$108,908	Yes	10+4	D	No	
23.	2015	Chev/Express 15	13	1GAZGZFF6F1277606	405	6941	90	0	4	\$27,457	No	15	G	No	
24.	2015	Chev/Express 15	13	1GAZGZFF6F1277110	406	4,485	90	0	4	\$27,457	No	15	G	No	
25.	2015	Chev/Express 15	13	1GAZGZFF6F1278144	407	7,715	90	0	4	\$27,457	No	15	G	No	
26.	2008	Chev/Express 15	13	1GAHCG39K281190449	873	122,214	80	7	0	\$25,887	No	15	G	No	
27.	2008	Chev/Express 15	13	1GAHCG39K281191214	874	126,311	80	7	0	\$25,887	No	15	G	No	
28.	2012	Dodge/Caravan	13	2C4RDGCG6CR353739	1001	55,722	80	3	1	\$25,400	No	7	G	Yes	
29.	2012	Dodge/Caravan	13	2C4RDGCG6CR353742	1002	95,631	80	3	1	\$25,400	No	7	G	Yes	
30.	2012	Dodge/Caravan	13	2C4RDGCG6CR353740	1003	79,690	80	3	1	\$25,400	No	7	G	No	
31.	2012	Dodge/Caravan	13	2C4RDGCG6CR353741	1004	63,285	80	3	1	\$25,400	No	7	G	No	
32.	2012	Dodge/Caravan	13	2C4RDGCG6CR353743	1005	73,162	80	3	1	\$25,400	No	7	G	No	
33.	2014	Chev/Express 15	13	1GAZG1FG9E1115591	895	44,094	80	2	2	\$27,216	No	15	G	No	
34.	2014	Chev/Express 15	13	1GAZG1FG9E1115639	896	40,880	80	2	2	\$27,216	No	15	G	No	
35.	2014	Chev/Express 15	13	1GAZG1FG9E1114947	897	57,273	80	2	2	\$27,216	No	15	G	No	
36.	2014	Chev/Express 15	13	1GAZG1FG9E1115267	898	41,929	80	2	2	\$27,216	No	15	G	No	
37.	2014	Chev/StarTrans/Senator	11	1GB6G5BL0C1200194	754	47,968	80	2	2	\$107,300	Yes	10+3	D	No	
38.	2013	Chev/StarTrans/Senator	11	1GB6G5BLXC1200736	755	45,467	80	2	2	\$107,300	Yes	10+3	D	No	
39.	2013	Chev/StarTrans/Senator	11	1GB6G5BL2C1201153	756	38,660	80	2	2	\$107,300	Yes	10+3	D	No	
40.	2013	Chev/StarTrans/Senator	11	1GB6G5BLXC1171643	757	38,166	80	2	2	\$107,300	Yes	10+3	D	No	
41.	2013	Chev/StarTrans/Senator	11	1GB6G5BL6C1200281	758	30,861	80	2	2	\$107,300	Yes	10+3	D	No	

was VP 832



**Public Transportation Management System  
Owned Rolling Stock Inventory & Verification of Continued Use**

No.	Year	Make/Model	Vehicle Code	Vehicle Identification Number (VIN)	Agency Vehicle Number	Actual/Life Odometer	Condition (points)	Age (years)	Remaining Useful Life (years)	Replacement Cost \$	ADA Access (yes/no)	Seating Capacity	Fuel Type	WSDOT Title (yes/no)
42.	2015	Ford/Escape	28	1FMCU9GX6FUB42441	936	8,177	90	0	4	\$24,172	No	5	G	No
43.	2015	Dodge/Caravan	13	2C4RDGCG6FR659695	1019	3,582	90	0	4	\$25,500	No	7	G	Yes
44.	2015	Dodge/Caravan	13	2C4RDGCG6FR659696	1020	6,023	90	0	4	\$25,500	No	7	G	Yes
45.	2005	Chevy/Express 15	13	1GAHCG39U451238630	880	121,882	80	10	0	\$25,000	No	15	G	No
46.	2012	Chevy/Express 15	13	1GAZCG1FG4C1196223	887	75,539	80	3	1	\$26,483	No	15	G	No
47.	2012	Chevy/Express 15	13	1GAZCG1FGXC1196419	888	76,300	80	3	1	\$26,483	No	15	G	No
48.	2012	Chevy/Express 15	13	1GAZCG1FG4C1195508	889	62,808	80	3	1	\$26,483	No	15	G	No
49.	2012	Chevy/Express 15	13	1GAZCG1FG3C1195631	890	68,853	80	3	1	\$26,483	No	15	G	No
50.	2012	Chevy/Express 15	13	1GAZCG1FG0C1195988	891	61,444	80	3	1	\$26,483	No	15	G	No
51.	2012	Chevy/Express 15	13	1GAZCG1FG5C1197882	892	82,465	80	3	1	\$26,483	No	15	G	No
52.	2012	Chevy/Express 15	13	1GAZCG1FG3C1197038	893	75,572	80	3	1	\$26,483	No	15	G	No
53.	2012	Dodge/Caravan	13	2C4RDGCG3CR353744	1006	73,660	80	3	1	\$25,400	No	7	G	No
54.	2012	Dodge/Caravan	13	2C4RDGCG3CR353745	1007	71,319	80	3	1	\$25,400	No	7	G	No
55.	2012	Dodge/Caravan	13	2C4RDGCG7CR353746	1008	88,199	80	3	1	\$25,400	No	7	G	No
56.	2012	Dodge/Caravan	13	2C4RDGCG9CR353747	1009	102,456	80	3	1	\$25,400	No	7	G	No
57.	2014	Chev/Express 15	13	1GAZCG1FGXE1115082	899	53,478	90	2	2	\$27,216	No	15	G	No
58.	2014	Chev/Express 15	13	1GAZCG1FG6E1115385	401	29,735	90	2	2	\$27,216	No	15	G	No
59.	2014	Chev/Express 15	13	1GAZCG1FG4E1116664	402	39,960	90	2	2	\$27,216	No	15	G	No
60.	2006	Dodge/Caravan	28	2D8GP44L86R835446	929	125,193	80	9	0	\$20,013	No	7	G	No
61.	2006	Dodge/Caravan	28	2D8GP44L66R835445	930	158,101	80	9	0	\$20,013	No	7	G	No
62.	2005	Dodge/Caravan	28	2D8GP44L65R184042	931	14,213	80	10	0	\$20,943	No	7	G	No

**Public Transportation Management System  
Owned Rolling Stock Inventory & Verification of Continued Use**

No.	Year	Year/Make/Model	Vehicle Code	Vehicle Identifi- carbon Number (VIN)	Agency Vehicle Number	Actual/Life Odometer	Condition (points)	Age (years)	Remaining Useful Life (years)	Replacement Cost \$	ADA Access (yes/no)	Seating Capacity	Fuel Type	WSDOT Title (yes/no)
63.	2012	Dodge/Caravan	13	2C4RDGCGCGR353748	1010	51,089	80	3	1	\$25,400	No	7	G	No
64.	2010	Chev/StarTrans/Senator	11	1GB9G5A61A1122062	745	159,171	70	5	0	\$114,889	Yes	10+3	D	No
65.	2010	Chev/Impala	28	2G1WA5EK3A1205387	924	39,084	80	5	0	\$17,305	No	5	G	No
66.	2012	Dodge/Caravan	13	2C4RDGCGCGR353749	1011	83,376	80	3	1	\$25,400	No	7	G	No
67.	2012	Dodge/Caravan	13	2C4RDGCGCGR353750	1012	112,142	80	3	1	\$25,400	No	7	G	No
68.	2012	Dodge/Caravan	13	2C4RDGCGCGR353751	1013	92,420	80	3	1	\$25,400	No	7	G	No
69.	2012	Dodge/Caravan	13	2C4RDGCGCGR353752	1014	106,460	80	3	1	\$25,400	No	7	G	No
70.	2012	Dodge/Caravan	13	2C4RDGCGCGR353753	1015	39,557	80	3	1	\$25,400	No	7	G	No
71.	2007	Gillig/Phantom	01	15CCD27127112855	071	376,932	70	8	4	\$350,000	Yes	43+2	D	No
72.	2007	Gillig/Phantom	01	15CCD27127112856	072	420,584	70	8	4	\$350,000	Yes	43+2	D	No
73.	2007	Gillig/Phantom	01	15CCD27127112857	073	399,054	70	8	4	\$350,000	Yes	43+2	D	No
74.	2007	Gillig/Phantom	01	15CCD27127112858	074	408,108	70	8	4	\$350,000	Yes	43+2	D	No
75.	2007	Gillig/Phantom	01	15CCD27127112859	075	401,784	70	8	4	\$350,000	Yes	43+2	D	No
76.	2009	Nabi/31LFW-01	03	IN93136669A140004	091	297,559	60	6	4	\$307,518	Yes	25+2	D	No
77.	2009	Nabi/31LFW-01	03	IN93136689A140005	092	278,810	60	6	4	\$307,518	Yes	25+2	D	Yes
78.	2009	Nabi/31LFW-01	03	IN931366X9A140006	093	291,748	60	6	4	\$307,518	Yes	25+2	D	No
79.	2009	Nabi/31LFW-01	03	IN93136619A140007	094	290,831	60	6	4	\$307,518	Yes	25+2	D	No
80.	2009	Nabi/31LFW-01	03	IN93136639A140008	095	294,329	60	6	4	\$307,518	Yes	25+2	D	No
81.	2009	Nabi/31LFW-01	03	IN93136659A140009	096	279,825	60	6	4	\$307,518	Yes	25+2	D	No
82.	2014	Chev/Express 15	13	1GAZG1FG4E1116390	403	30,935	90	2	2	\$27,216	No	15	G	No
83.	2014	Chev/Express 15	13	1GAZG1FG45E1115913	404	21,584	90	2	2	\$27,216	No	15	G	No
84.	2006	Dodge/Caravan	28	2D8GP44LX6R835447	928	138,706	80	9	0	\$20,013	No	7	G	No

**Public Transportation Management System  
Owned Rolling Stock Inventory & Verification of Continued Use**

No.	Year	Make/Model	Vehicle Code	Vehicle Identification Number (VIN)	Agency Vehicle Number	Actual/Life Odometer	Condition (points)	Age (years)	Remaining Useful Life (years)	Replacement Cost \$	ADA Access (yes/no)	Seating Capacity	Fuel Type	WSDOT Title (yes/no)	Notes:
85.	2013	Chev/StarTrans/Senator	11	1GB6G5BL0C1201345	155	100,686	90	2	3	\$117,000	Yes	19+2	D	No	Was Para 751
86.	2014	Chev/StarTrans/Senator	11	1GB6G5BL7C1200578	156	57,174	90	2	3	\$117,000	Yes	19+2	D	No	Was Para 752
87.	2013	Chev/StarTrans/Senator	11	1GB6G5BL8C1200900	157	31,412	80	2	3	\$119,300	Yes	14+2	D	No	Was Para 753
88.	2012	Dodge/Caravan	13	2C4RDGCG6CR353754	1016	63,396	80	3	1	\$25,400	No	7	G	No	
89.	2004	Toyota/Prius Hybrid	28	1TDKB20U340039883	915	72,650	80	11	0	\$25,000	No	5	G/E	No	
90.	2004	Ford/F450XL PU	28	1FDXF46P94EC48891	916	46,746	80	11	0	\$28,000	No	3	D	No	
91.	2005	TaurusSE Sedan	28	1FAHP53225A312322	918	62,075	80	10	0	\$15,000	No	5	G	No	
92.	2008	Ford/F250 SD PU	28	1FTSX21K18EA62941	920	107,257	80	7	0	\$35,000	No	4	D	No	
93.	2009	Chevy/Colorado	28	1GCCS14E398145793	921	56,076	80	6	0	\$14,615	No	3	G	No	
94.	2009	Ford/Escape	28	1FMCU927X9KB86367	922	54,401	80	6	0	\$17,602	No	5	G	No	
95.	2009	Ford/Escape	28	1FMCU92719KB86368	923	61,852	80	6	0	\$17,602	No	5	G	No	
96.	2010	Chev/ARBOC	04	1GBKG316391135364	102	332,590	50	5	6	\$142,747	Yes	17+2	D	No	
97.	2010	Chev/ARBOC	04	1GBKG316791134847	103	329,389	50	5	6	\$142,747	Yes	17+2	D	No	
98.	2010	Chev/StarTrans/Senator	11	1GB9G5A60A1122294	739	128,621	80	5	0	\$114,889	Yes	10+3	D	No	
99.	2010	Chev/StarTrans/Senator	11	1GB9G5A67A1122213	740	201,663	80	2	0	\$114,889	Yes	10+3	D	No	
100.	2006	Dodge/Caravan	28	2D8GP44L26R868328	927	135,327	80	9	0	\$20,013	No	7	G	No	
101.	2015	Dodge/Caravan	13	2C4RDGCG6CR659697	1021	13,835	100	0	4	\$25,500	No	7	G	No	
102.	2015	Dodge/Grand Caravan	13	2C4RDGCG6CR661126	1022	19,752	90	0	4	\$25,500	No	7	G	Yes	

**Public Transportation Management System  
Owned Rolling Stock Inventory & Verification of Continued Use**

No.	Year	Make/Model	Vehicle Code	Vehicle Identification Number (VIN)	Agency Vehicle Number	Actual/Life Odometer	Condition (points)	Age (years)	Remaining Useful Life (years)	Replacement Cost \$	ADA Access (yes/no)	Seating Capacity	Fuel Type	WSDOT Title (yes/no)	Notes
103.	2010	Chev/StarTrans/Senator	11	1CB9G5A62A1121857	741	159,136	60	5	0	\$114,889	Yes	10+3	D	No	
104.	2010	Chev/StarTrans/Senator	11	1CB9G5A65A1121755	742	105,711	60	5	0	\$96,206	Yes	10+3	D	No	
105.	2010	Chev/StarTrans/Senator	11	1CB9G5A65A1121786	743	133,657	60	5	0	\$96,206	Yes	10+3	D	No	
106.	2010	Chev/StarTrans/Senator	11	1CB9G5A69A1121158	744	133,911	60	5	0	\$96,206	Yes	10+3	D	No	
107.	2005	Dodge/Caravan	28	2DBGP44L85R184043	925	182,086	70	10	0	\$22,000	No	7	G	No	
108.	2011	Gillig/Low Floor	02	15GCB2715B1178544	111	170,628	80	4	8	\$350,000	Yes	32+2	D	Yes	
109.	2011	Dodge/Caravan	13	2D4RN4DC2BR647082	822	73,699	80	4	0	\$22,000	No	7	G	No	
110.	2011	Dodge/Caravan	13	2D4RN4DC4BR647083	823	95,217	80	4	0	\$22,000	No	7	G	No	
111.	2011	Dodge/Caravan	13	2D4RN4DC6BR647084	824	63,421	80	4	0	\$22,000	No	7	G	No	
112.	2011	Dodge/Caravan	13	2D4RN4DC8BR647085	825	93,813	80	4	0	\$22,000	No	7	G	No	
113.	2011	Dodge/Caravan	13	2D4RN4DCXBR647086	826	77,492	80	4	0	\$22,000	No	7	G	No	
114.	2011	Ford/Econoline Pass	13	1FBSS3BL3BD448197	883	125,098	80	4	0	\$26,000	No	15	G	No	
115.	2011	Ford/Econoline Pass	13	1FBSS3BL5BD448198	884	120,074	80	4	0	\$26,000	No	15	G	No	
116.	2011	Ford/Econoline Pass	13	1FBSS3BL7BD448199	885	94,557	80	4	0	\$26,000	No	15	G	No	
117.	2011	Ford/Econoline Pass	13	1FBSS3BLXBD448200	886	88,810	80	4	0	\$26,000	No	15	G	No	
118.	2012	Chev/StarTrans/Senator	11	1CB6G3BL3C1124566	153	137,930	70	3	2	\$130,000	Yes	19+2	D	No	
119.	2012	Chev/StarTrans/Senator	11	1CB6G3BL7C1124909	154	129,154	70	3	2	\$130,000	No	19+2	D	No	

WAS FATA

746

WAS FATA

**Public Transportation Management System  
Owned Rolling Stock Inventory & Verification of Continued Use**

No.	Year	Make/Model	Vehicle Code	Vehicle Identification Number (VIN)	Agency Vehicle Number	Actual/Life Odometer	Condition (points)	Age (years)	Remaining Useful Life (years)	Replacement Cost \$	ADA Access (yes/no)	Seating Capacity	Fuel Type	WSPOT Title (yes/no)
120.	2012	Chev/StarTrans/Senator	11	1CB6G5B36C1124772	748	67,007	70	3	2	\$101,600	No	10+3	D	No
121.	2012	Chev/StarTrans/Senator	11	1CB6G5BL9C1125737	749	80,119	70	3	2	\$101,600	No	10+3	D	No
122.	2012	Chev/StarTrans/Senator	11	1CB6G5BL8C1125633	750	81,867	70	3	2	\$101,600	No	10+3	D	No
123.	2012	Chev/Express 12	13	1GAZGYFAXC1194979	835	74,861	80	3	1	\$24,500	No	12	G	No
124.	2004	Gilling/Low Floor	03	15GGE291X41090659	121	466,520	80	11	0	\$300,000	Yes	32+2	D	No
125.	2004	Gilling/Low Floor	03	15GGE291641090660	122	462,001	80	11	0	\$300,000	Yes	32+2	D	No
126.	2004	Gilling/Low Floor	03	15GGE291841090661	123	469,180	80	11	0	\$300,000	Yes	32+2	D	No
127.	2012	Ford/F-550	12	1FD0X5HT9CEC05827	926	84,474	80	3	2	\$58,500	No	4	D	No
128.	2015	Dodge/Grand Caravan	13	2C4RDGCG1FR661127	1023	7,671	90	0	4	\$25,500	No	7	G	Yes
129.	2015	Dodge/Grand Caravan	13	2C4RDGCG3FR661128	1024	5,674	90	0	4	\$25,500	No	7	G	Yes
130.	2015	Dodge/Grand Caravan	13	2C4RDGCG3FR659699	1025	13,915	90	0	4	\$25,500	No	7	G	No
131.	2015	Dodge/Grand Caravan	13	2C4RDGCG3FR661128	1026	13,736	90	0	4	\$25,500	No	7	G	No
132.	2015	Dodge/Grand Caravan	13	2C4RDGCG1FR659698	1027	11,050	90	0	4	\$25,500	No	7	G	No
133.	2015	Dodge/Grand Caravan	13	2C4RDGCG0FR691008	1028	1,295	90	0	4	\$25,500	No	7	G	Yes

## Public Transportation Management System Owned Facility Inventory

Skagit Transit

**Date:** December 31, 2015

*I hereby certify that all information reported in the inventories reflects true, accurate and complete information for the agency/organization listed and that project equipment purchased through a state or federal grant agreement is still being used in accordance with the terms and conditions of the grant agreement.*

Signature and Title

Facilities & Maintenance Manager

Date

Facility Code	Facility Name	Condition (points)	Age (years)	Remaining Useful Life (years)	Replacement Cost (\$)	Comments (If more than two lines, please attach a separate comment page)
1. 23	Maintenance/Operations/Administration Base	70	15	15	\$2,400,000	Land is leased from Skagit County
2. 06	Skagit Station Multi-Modal Transfer Center	80	10	30	\$2,095,000	100 Stall Park & Ride
3. 9	South Mount Vernon	90	4	35	\$3,810,000	382 Stall Park & Ride
4. 9	Chuckanut Park and Ride	90	4	36	\$1,878,000	368 Stall Park & Ride Property State Owned
5. 9	Alger Park and Ride	90	1	39	\$1,115,084	50 Stall Park & Ride
6. 9	March Point Park and Ride	80	8	22	\$643,000	133 Stall Park & Ride
7. 23	Maintenance/Operations/Administration Base		0	50	\$5,100,000	Land leased from Shell Oil Corp. Recently acquired property is undeveloped for intended purposes, not scored
8.						
9.						
10.						
11.						
12.						
13.						
14.						

**Public Transportation Management System  
Owned Equipment Inventory**

**Agency/Organization:** Skagit Transit  
**Date:** December 31, 2015

*I hereby certify that all information reported in the inventories reflects true, accurate and complete information for the agency/organization listed and that project equipment purchased through a state or federal grant agreement is still being used in accordance with the terms and conditions of the grant agreement.*

Facilities & Maintenance Manager

Signature and Title

Date

Equipment Code and Description	Condition (points)	Age (years)	Remaining Useful Life (years)	Replacement Cost (\$)	Comments (If more than two lines, please attach a separate comment page)
1. No Equipment with a value of \$100,000 or greater					
2.					
3.					
4.					
5.					
6.					
7.					
8.					
9.					
10.					
11.					
12.					
13.					
14.					
15.					