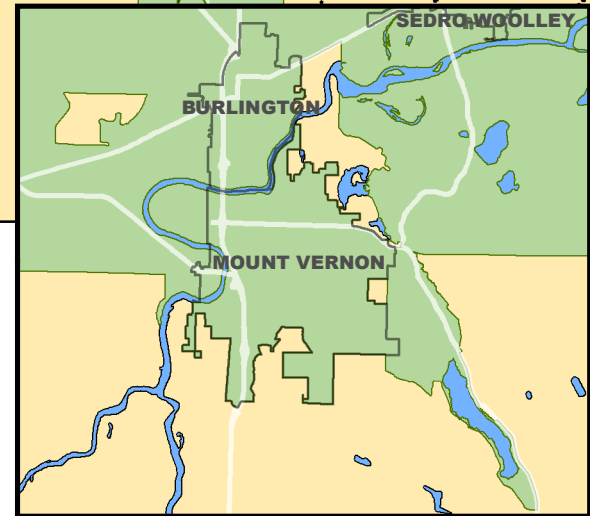
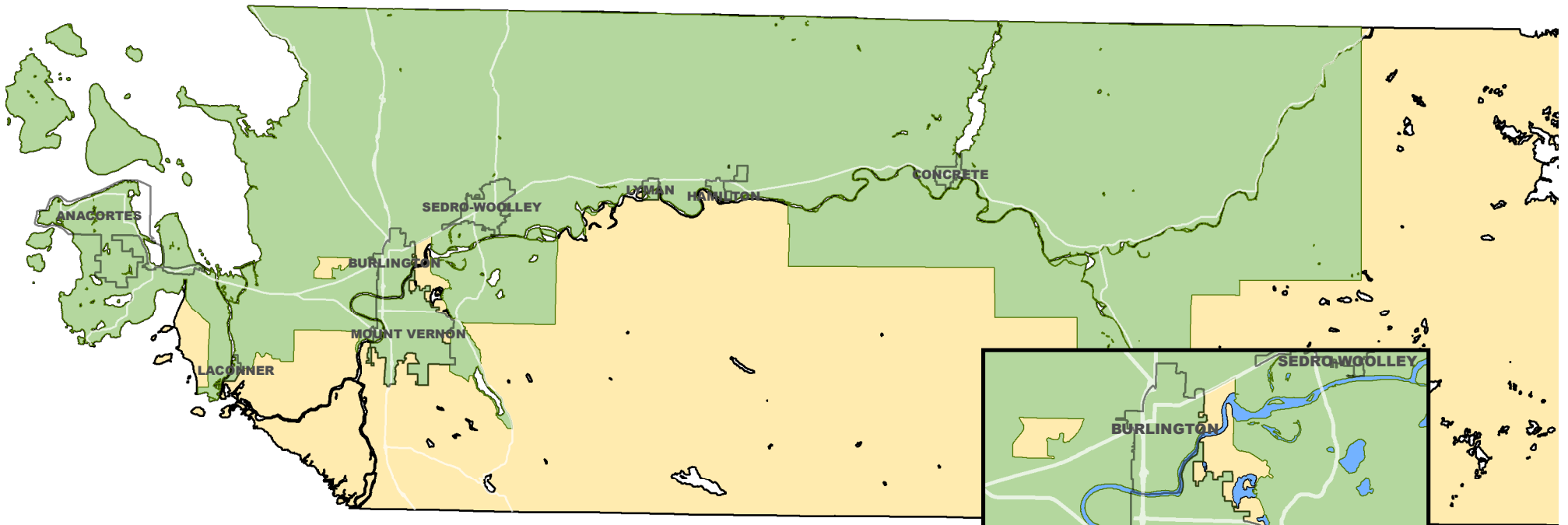





SKAGIT TRANSIT

Public Transportation Benefit Area (PTBA)



Legend

-  City Limits
-  PTBA 2014
-  Skagit County Land

The 2014 PTBA map builds on mapping work completed in 2009. The 2014 map adds to the boundaries two voting precincts, Shelter Bay and Big Lake. The area of the PTBA in 2014 was approximately 750 square miles exclusive of water bodies.

