

# Skagit Transit LRTP

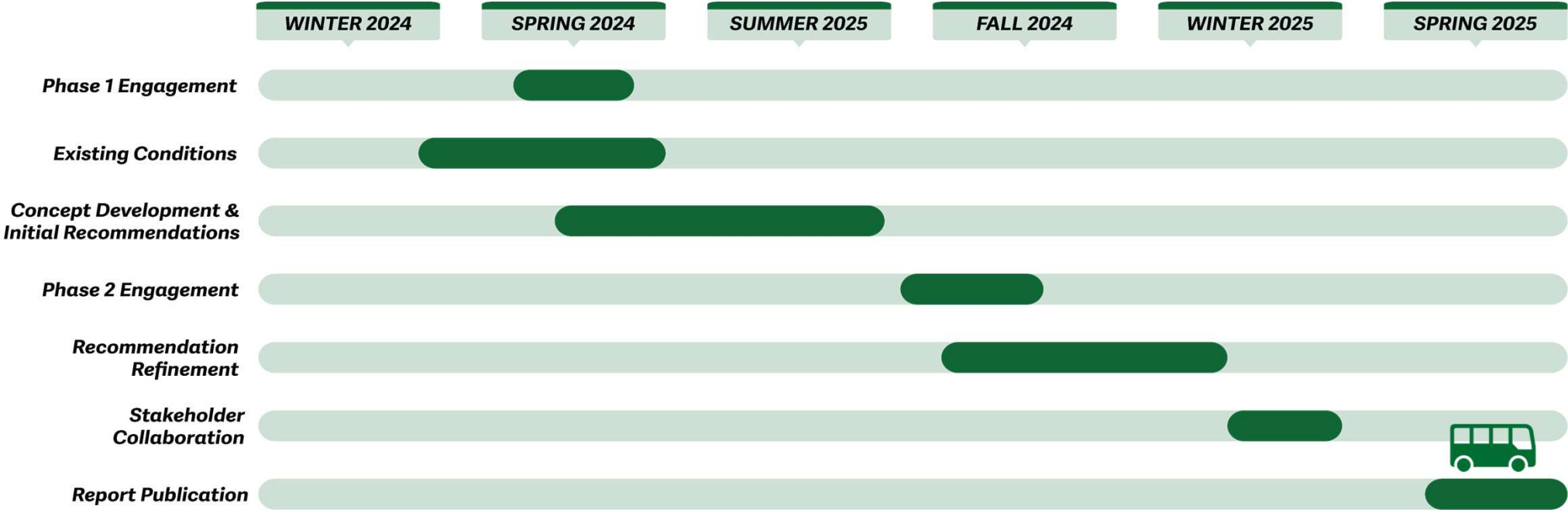
Skagit Transit Board Briefing

April 4, 2025

## LRTP Overview and Timeline

- LRTP provides a guide for the next 5-10 years of investment
- Review current service and operations and align with Skagit Transit's Mission, Vision, and Values
- Identify short-, medium-, and long-term implementation steps
- Establish regular opportunities for evaluation and refinement

# LRTP Overview and Timeline



# Agenda



Existing Conditions & Community Feedback



System-Wide Recommendations



Implementation Timeline



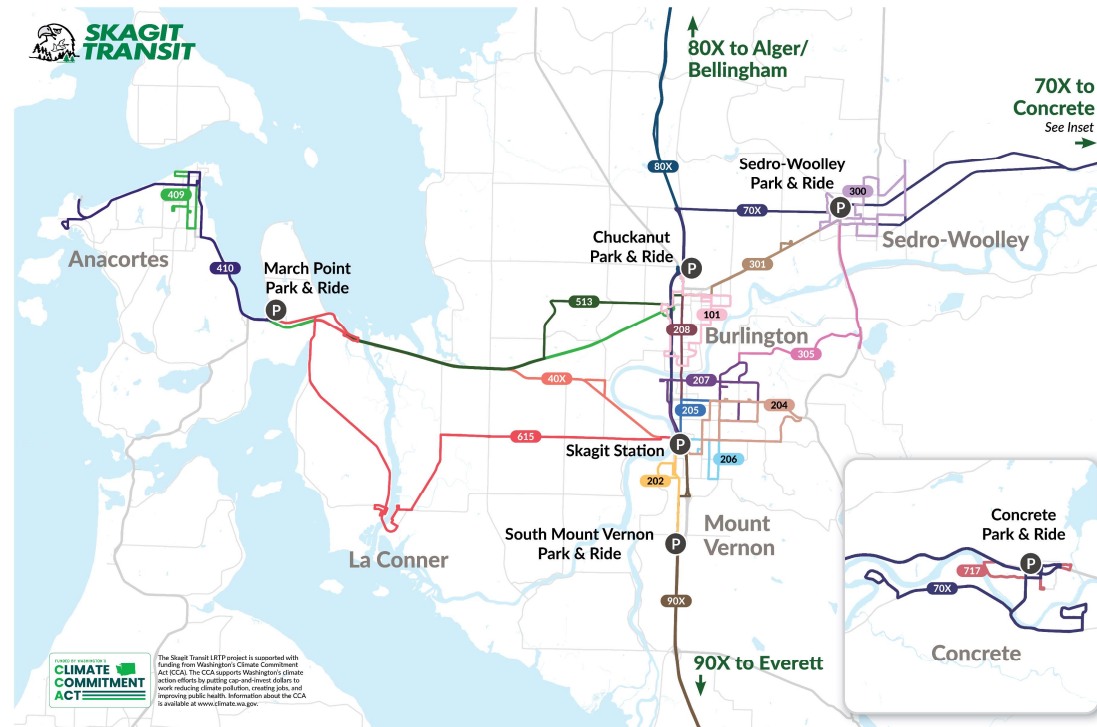
Route-by-Route Recommendations



# Existing Conditions & Community Feedback

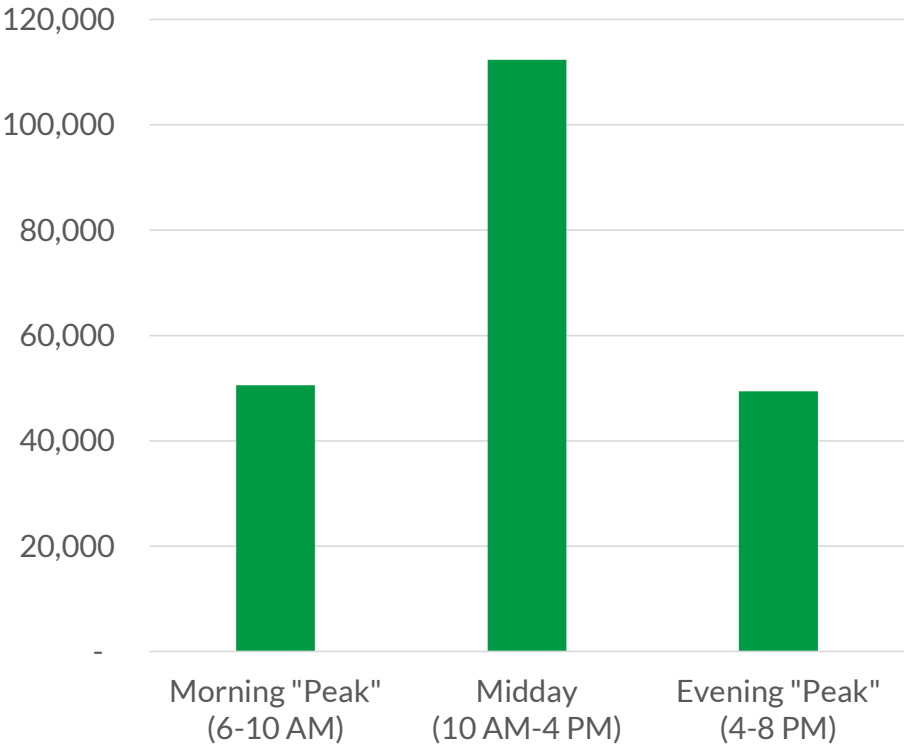
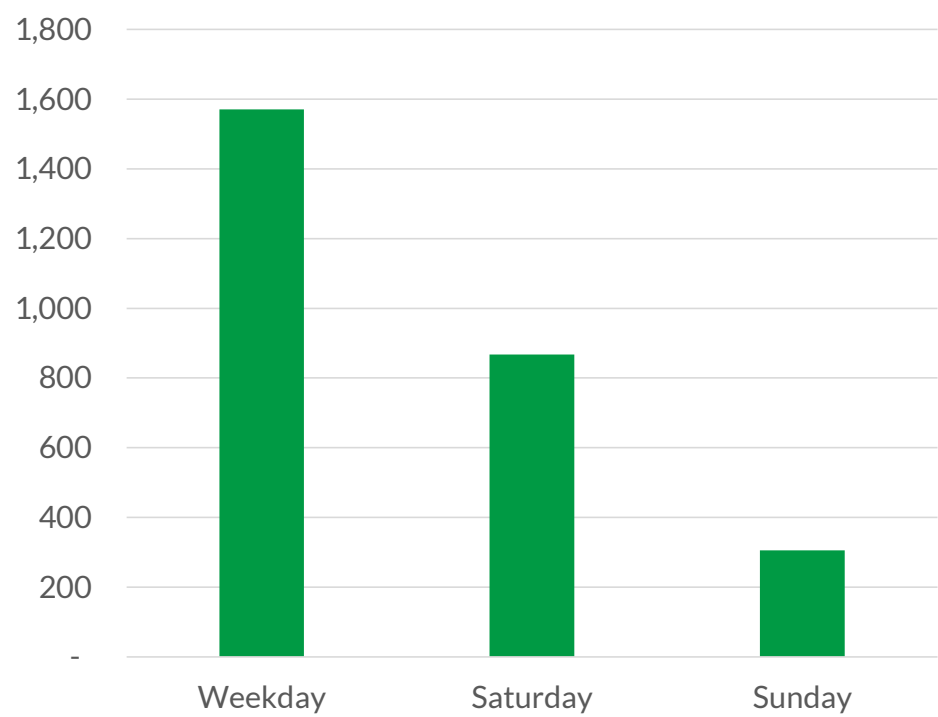
# Existing Conditions

- **Strengths**
  - Coverage
  - Serving priority populations
  - Providing access to jobs and services
  - Rider and Operator Facilities
- **Challenges**
  - Infrequent service
  - Circuitous service
  - Limited evening and weekend service





# Existing Conditions



Source: Skagit Transit, 2023; Whatcom Transportation Authority, 2023

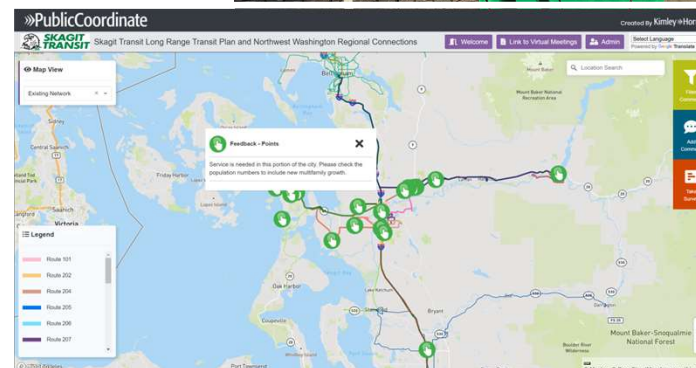


DRAFT - For Discussion Purposes Only



# Community Feedback

- Nearly 600 themes recorded
- Outreach included online surveys including interactive map, in-person open houses, written responses
- **Most Common Themes:**
  1. Increased frequencies
  2. Increased span of service
  3. Regional connectivity



# System Wide Recommendations

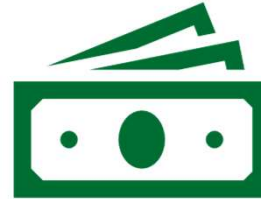
# The Big Picture for the LRTP



LRTP is a **road map** for ongoing investments in a resource-constrained environment



**Short-range refinements** are possible with existing resources



Continued **capital investment** in fleet, facilities, and stops to layer in additional service and improve customer experience



**Ongoing engagement and evaluation** to determine future opportunities

# Long-Term Service Recommendations



## *Route Changes*

- Streamlining
- Simplifying



## *Frequency Upgrades*

- Minimum standard
- Incremental upgrades

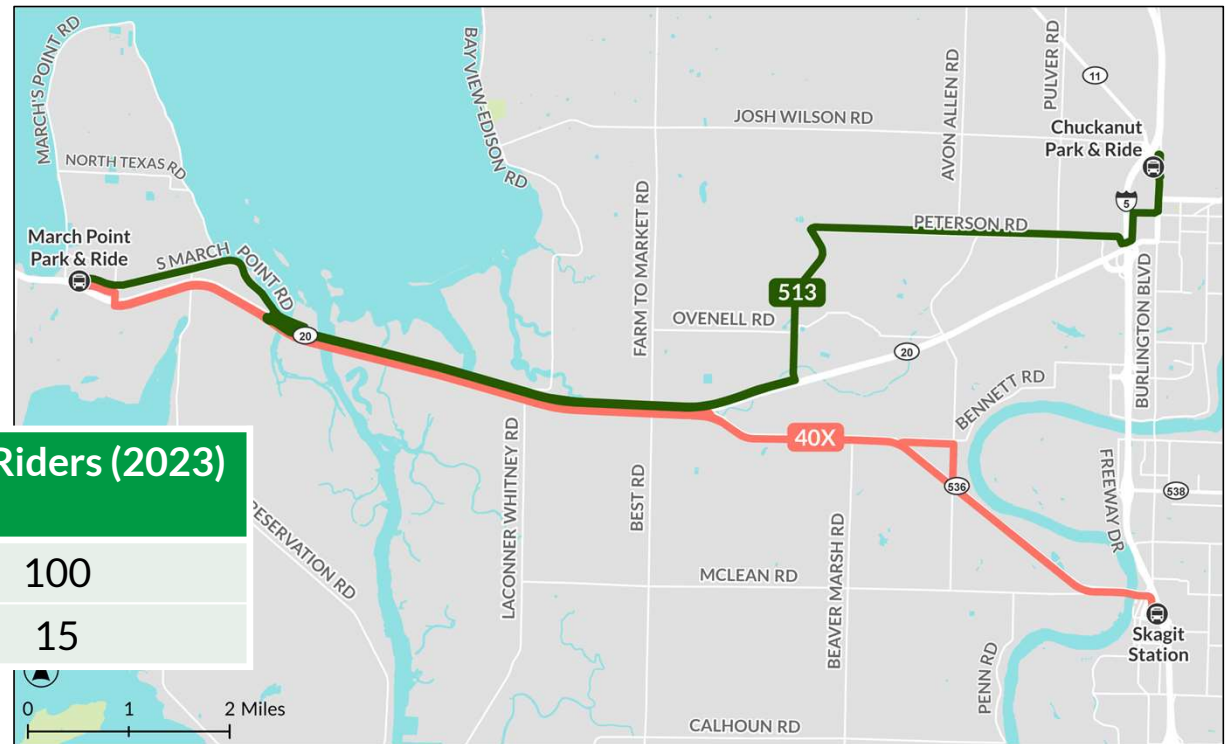


## *Service Availability*

- Later hours
- Sunday Service

# Duplicative Service

- **For Example:**  
Routes 40X and 513 perform the same function



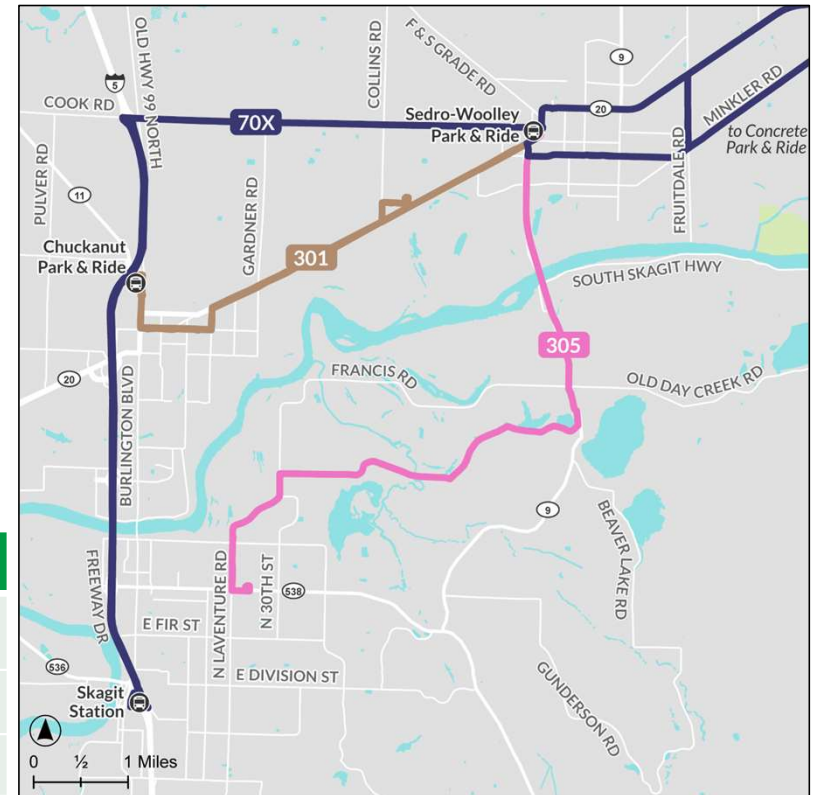
Route	Frequency	Riders/Hour	Daily Riders (2023)
40X	60	7	100
513	60	1	15



# Inconvenient Connections Between Cities

- Route **70X** provides a direct but infrequent connection to Skagit Station but bypasses Burlington/Chuckanut P&R
- Route **301** connects Sedro-Woolley and Chuckanut P&R
- Route **305** has few stops and only one major destination (Skagit Valley College)

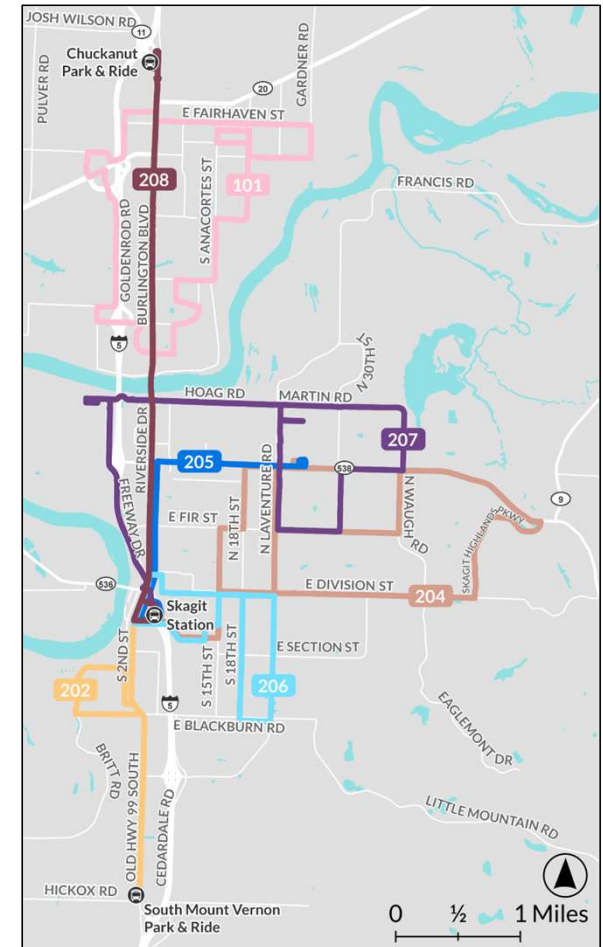
Route	Frequency
70X	180
301	60
305	60

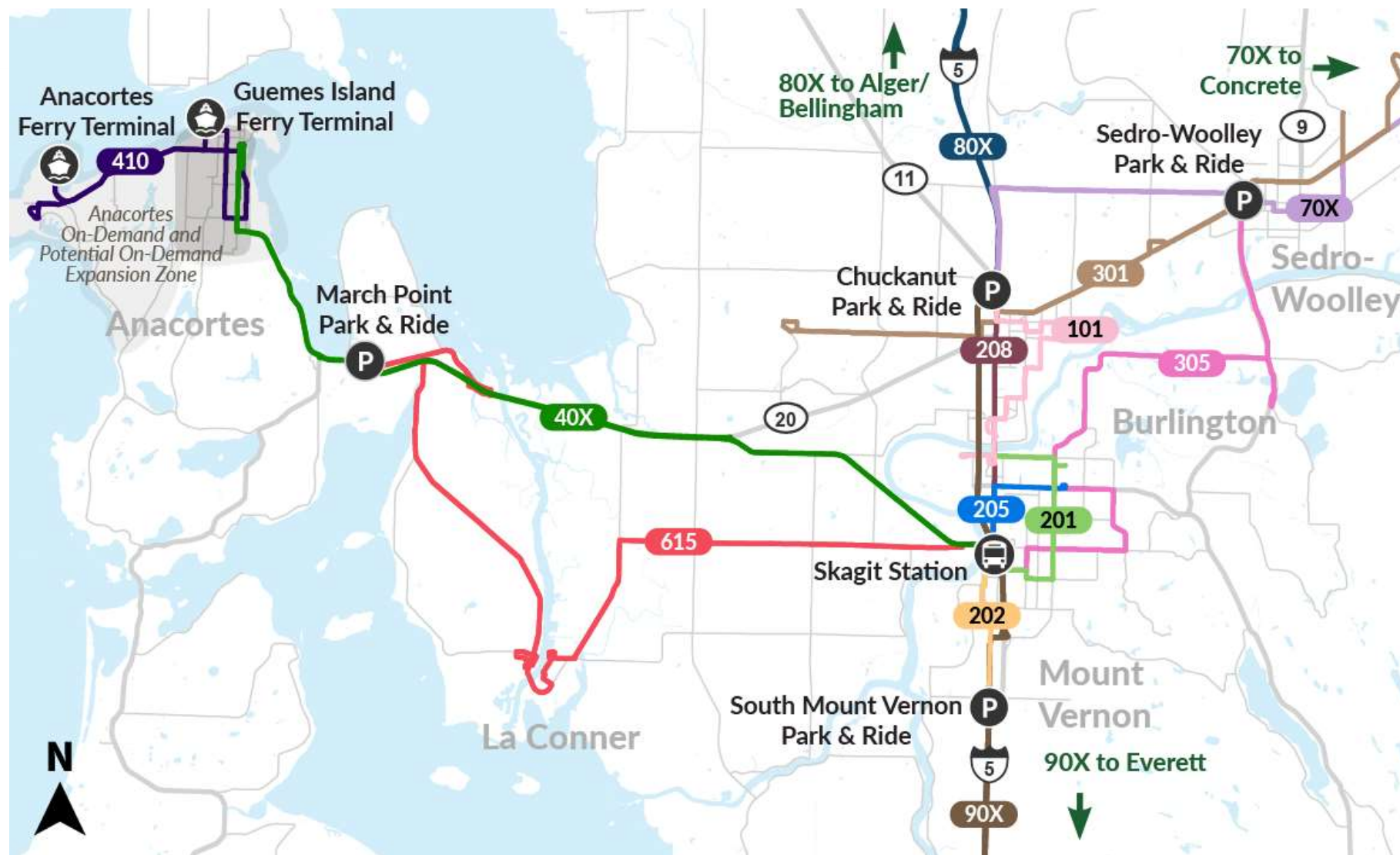


# Indirect Local Service

- Routes 202, 205, and 208 provide frequent and direct service along major streets
- Other local routes are indirect and/or infrequent

Route	Frequency
101	60
202	30
204	60
205	30
206	30
207	60
208	30



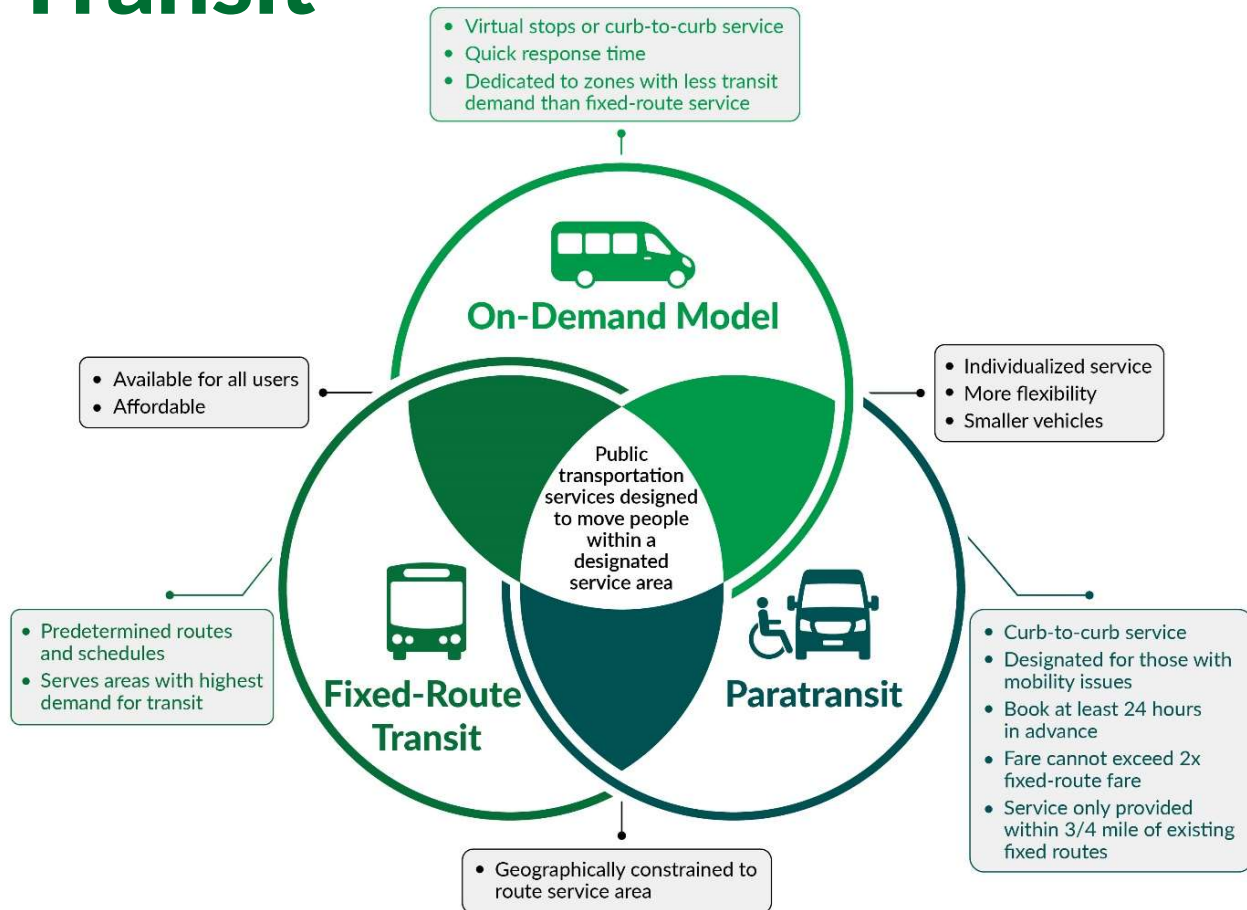


# Improvements and Consolidated/ Discontinued Routes

New Service	Significant Change	Minor Change	No Change	Discontinued Route
<b>201</b> Mount Vernon	<b>40X</b> Mount Vernon / Anacortes	<b>70X</b> Sedro-Wooley / Concrete	<b>205</b> Mount Vernon	<b>204</b> Mount Vernon
Anacortes On-Demand Zone	<b>101</b> Burlington	<b>80X</b> Bellingham Connect	<b>208</b> Mount Vernon	<b>206</b> Mount Vernon
	<b>301</b> Sedro-Wooley	<b>90X</b> Everett Connect	<b>615</b> La Conner	<b>207</b> Mount Vernon
	<b>305</b> Clear Lake	<b>202</b> South Mount Vernon	<b>717</b> Concrete	<b>300</b> Sedro-Wooley
	<b>410</b> Anacortes			<b>409</b> Anacortes
				<b>513</b> Burlington / Anacortes

# On-Demand Transit

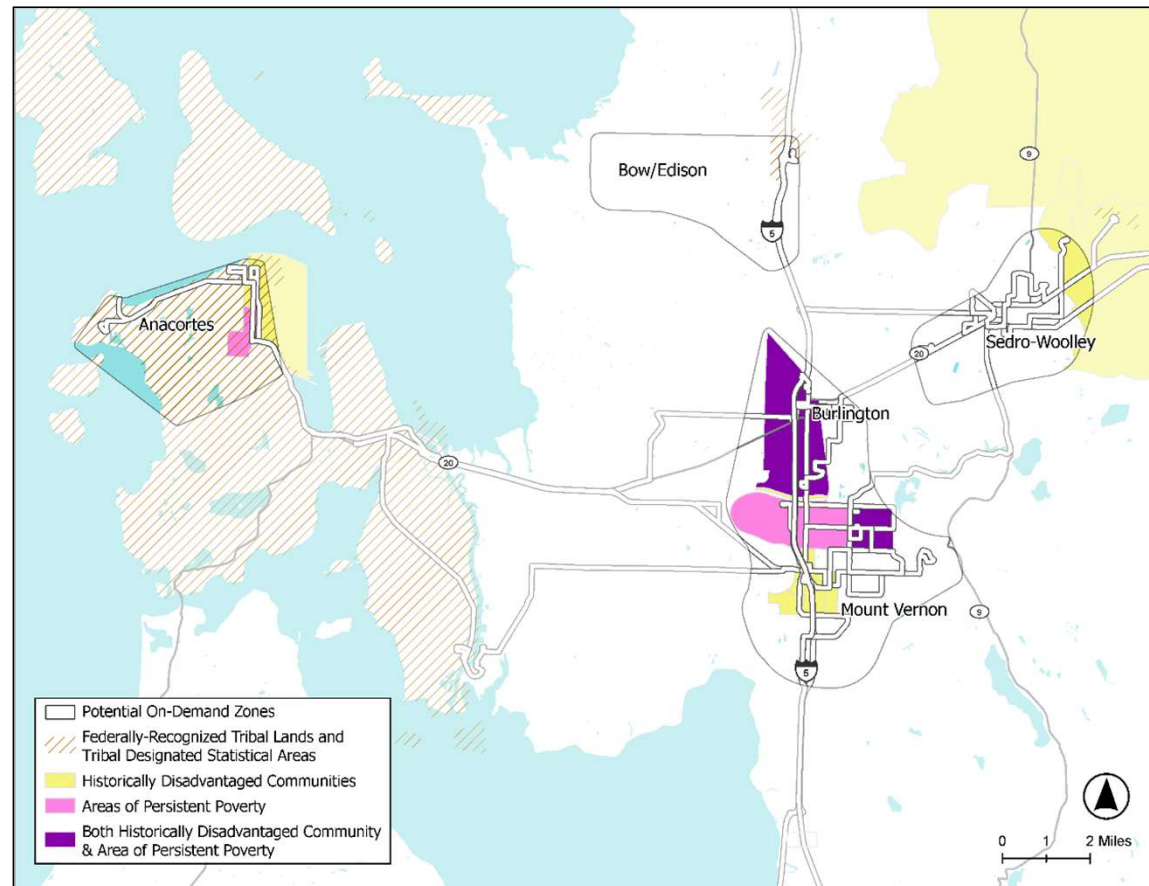
- Fills gaps between fixed-route and paratransit services
- Ability to get point-to-point rides within a service zone
- Accessible vehicles dispatched by app or phone





## On-Demand Transit

- Evaluated 5 potential locations across County
- Anacortes and Fidalgo Island provide best context to pilot service
- With pilot funding, could start service relatively quickly through a turnkey operator



## Other Investments

- Passenger and Operator Facilities
- Bus Stops
- Fleet Replacement and Expansion
- Transit Access and Integration



# Implementation Timeline

## Short-Range

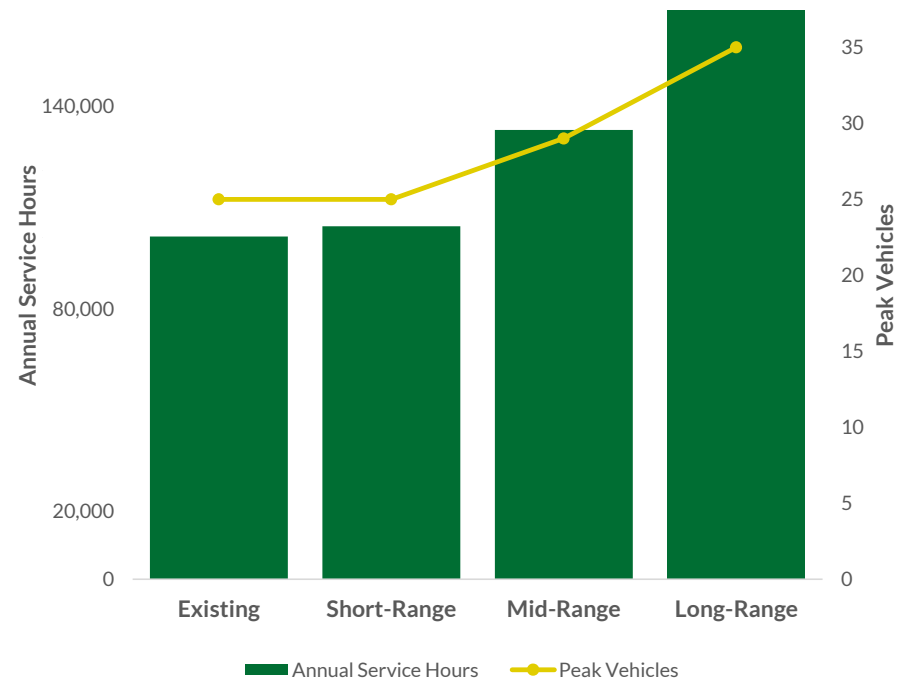
- Update routes and schedules
- Pilot on-demand in Anacortes\*

## Mid-Range

- Upgrade capital facilities\*
- Expand service (frequency/span)\*
- Refine on-demand service

## Long-Range

- Expand service (frequency/span)\*
- Improve access to transit
- Explore new service opportunities



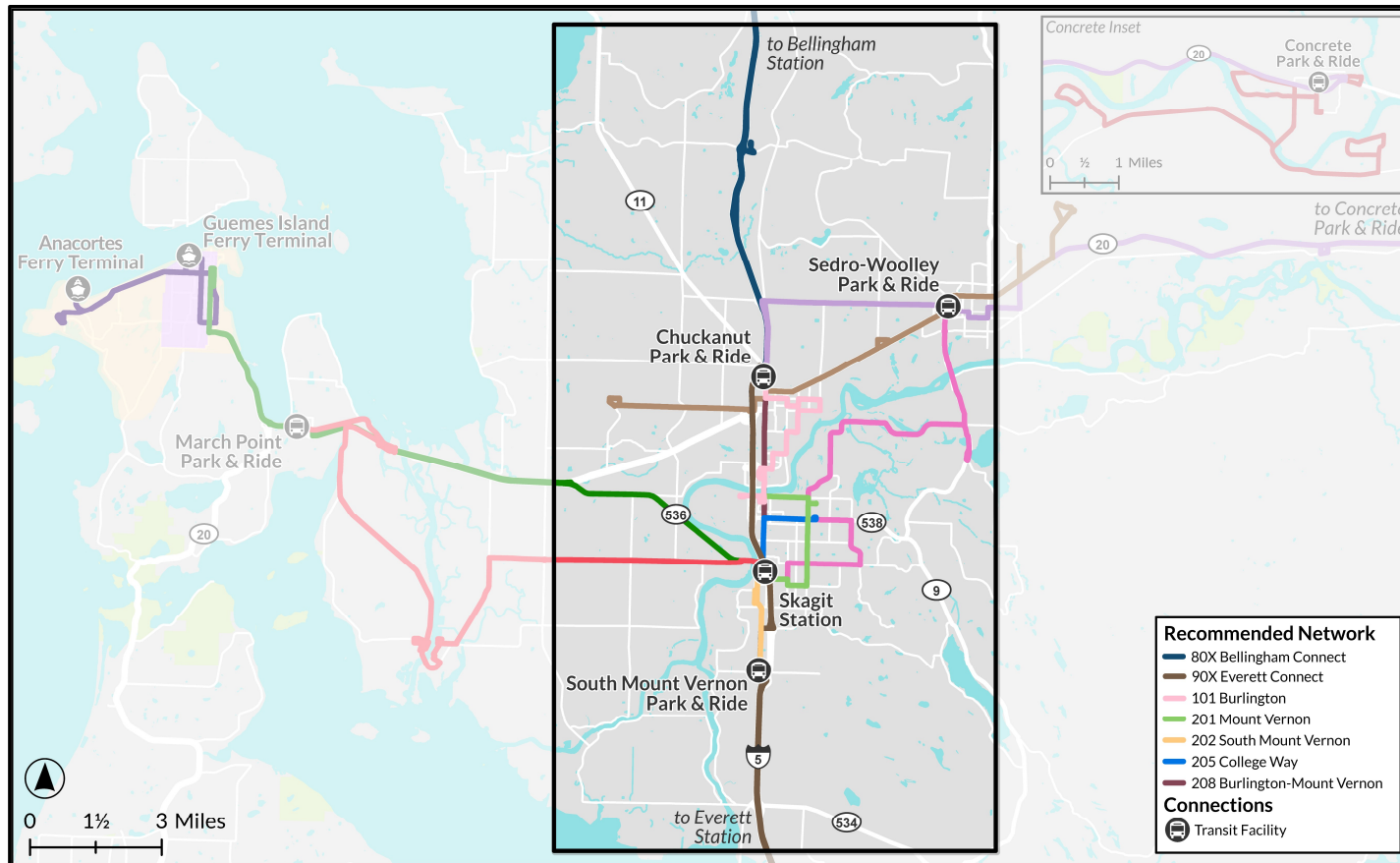
\* = Additional resources needed for implementation



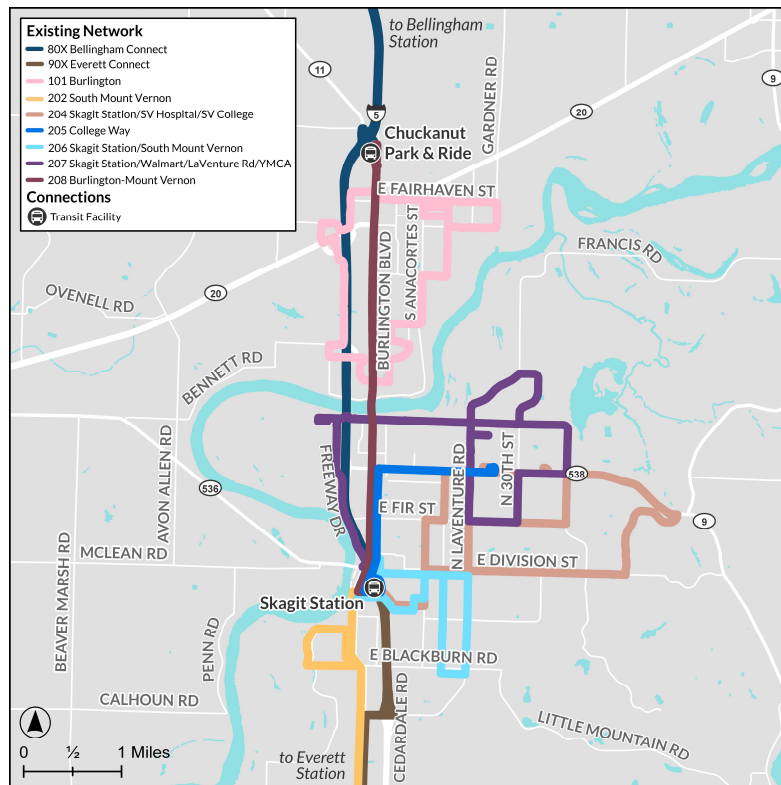
# Route Recommendations



# Central County



## Existing



## Recommended

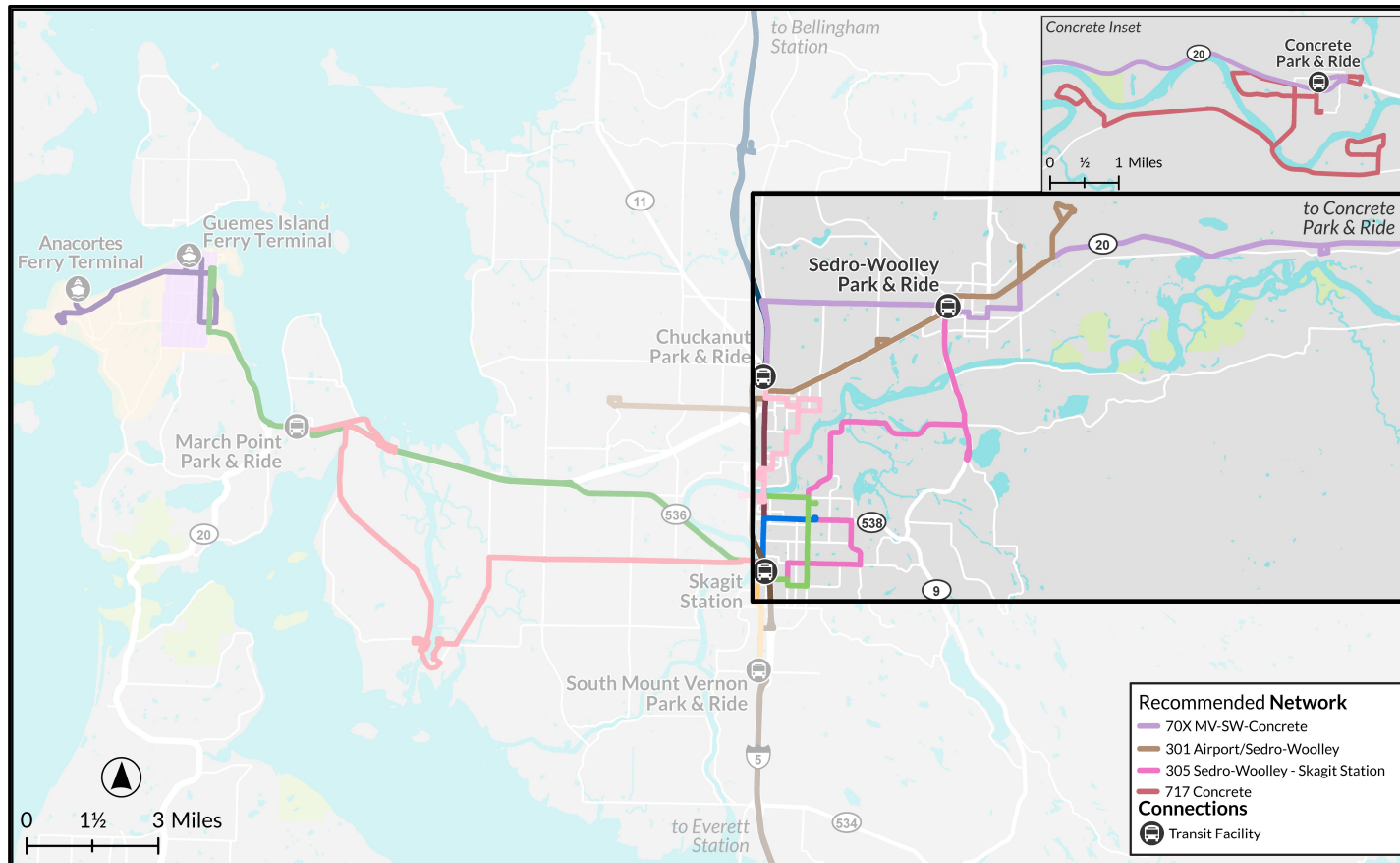


### Not Shown

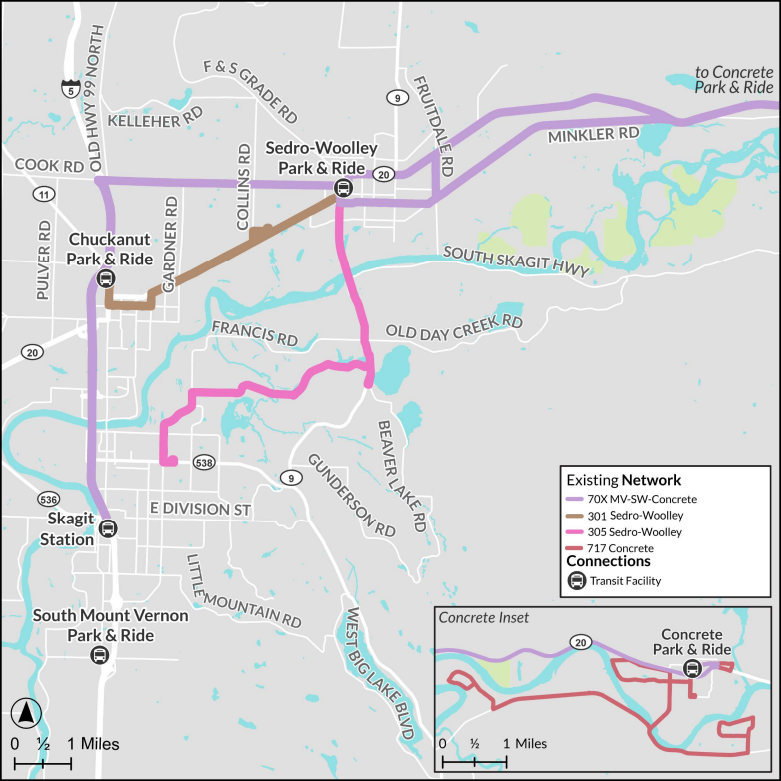
- 80X – Add stop at Skagit Valley Casino
- 90X – Add stop at Smokey Point Transit Center



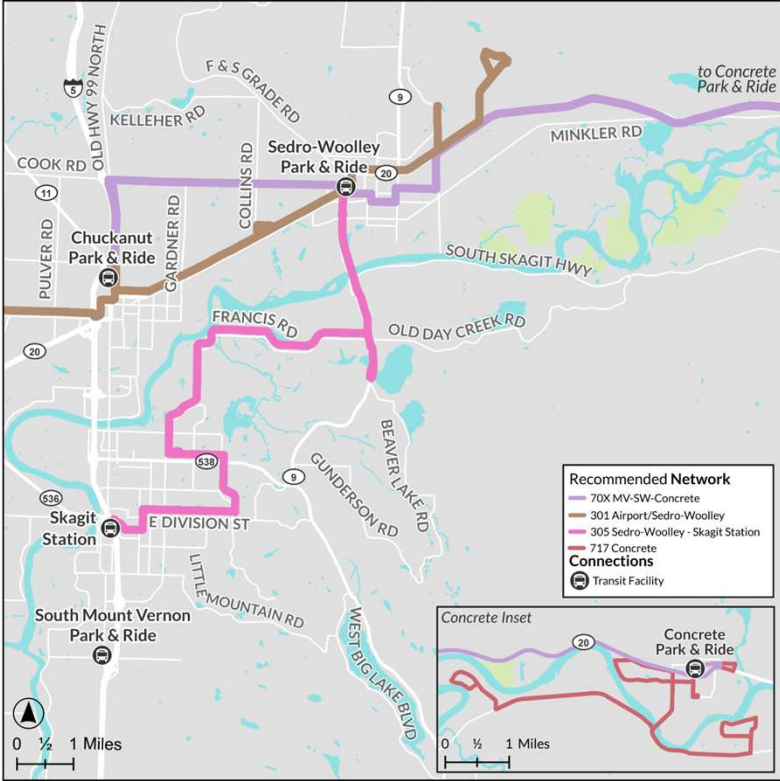
# East County



# Existing

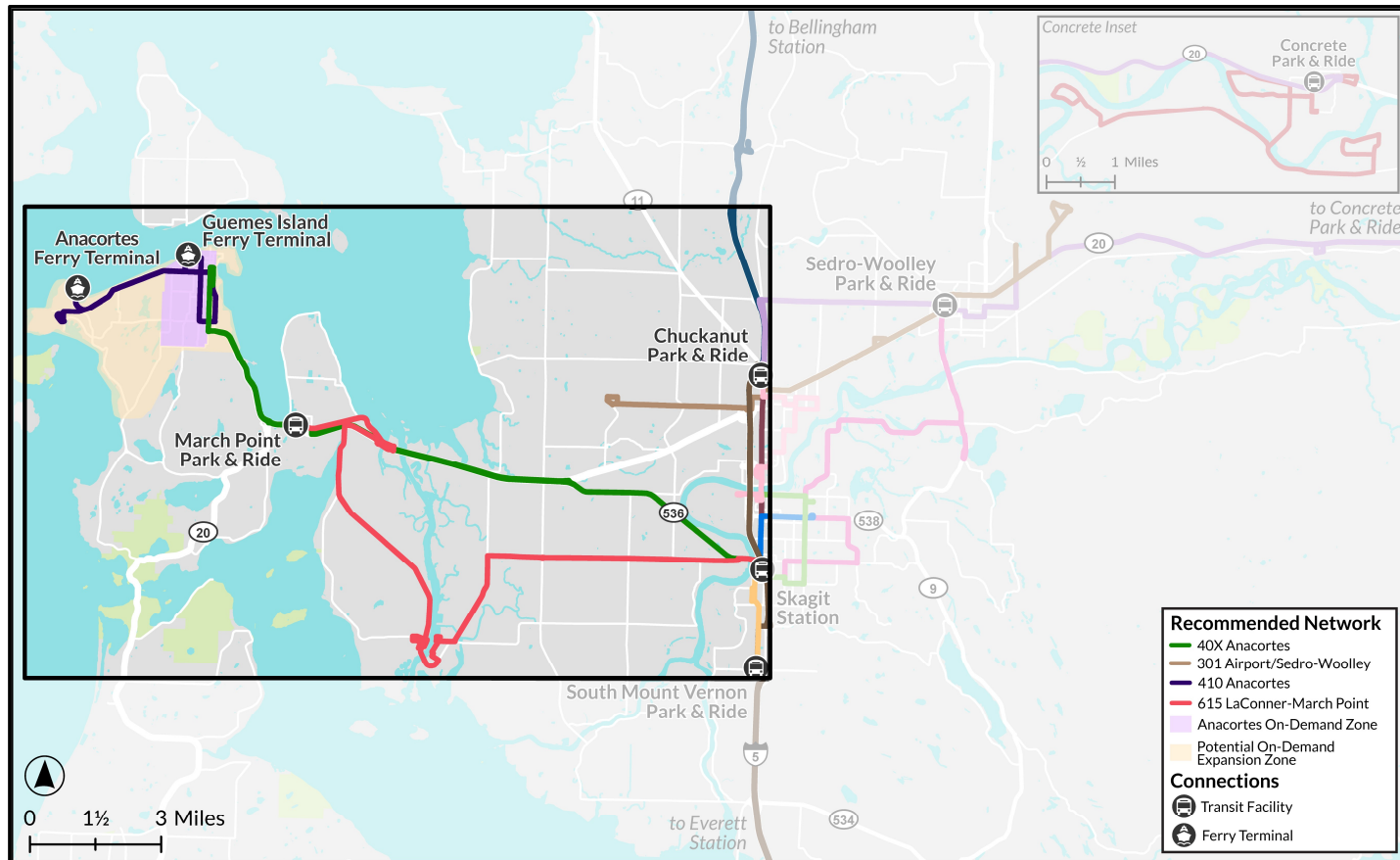


# Recommended



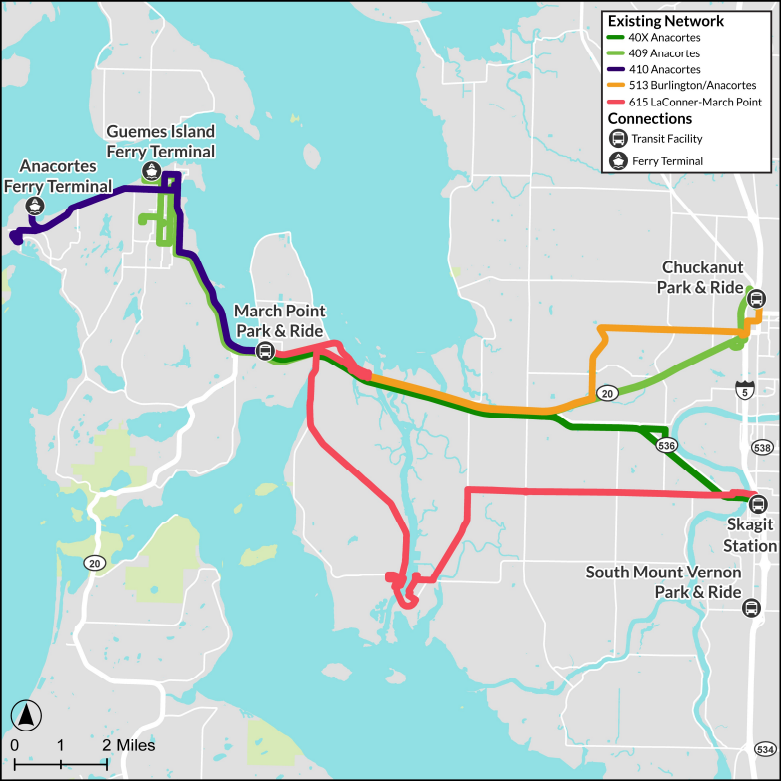


# West County

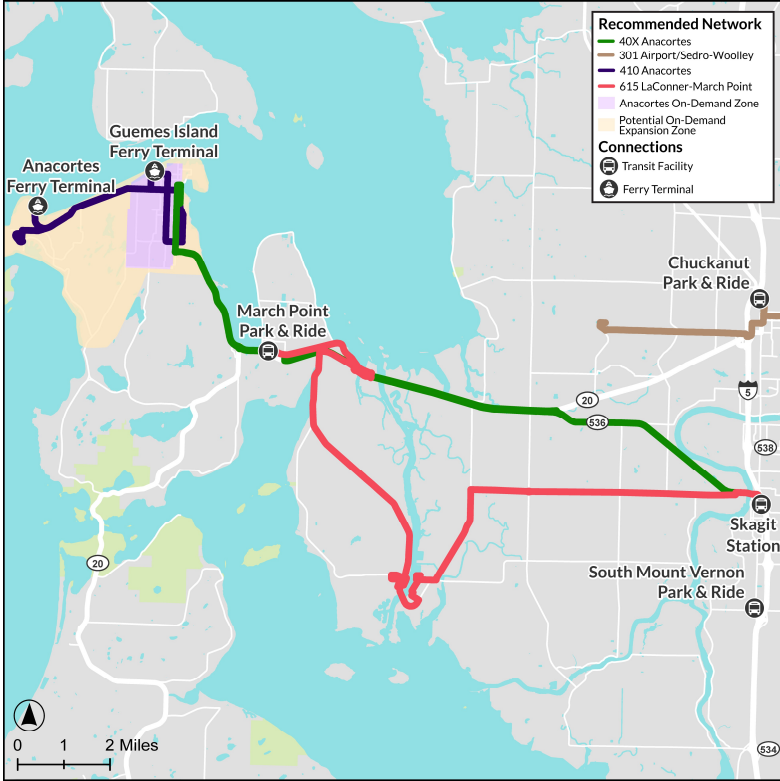




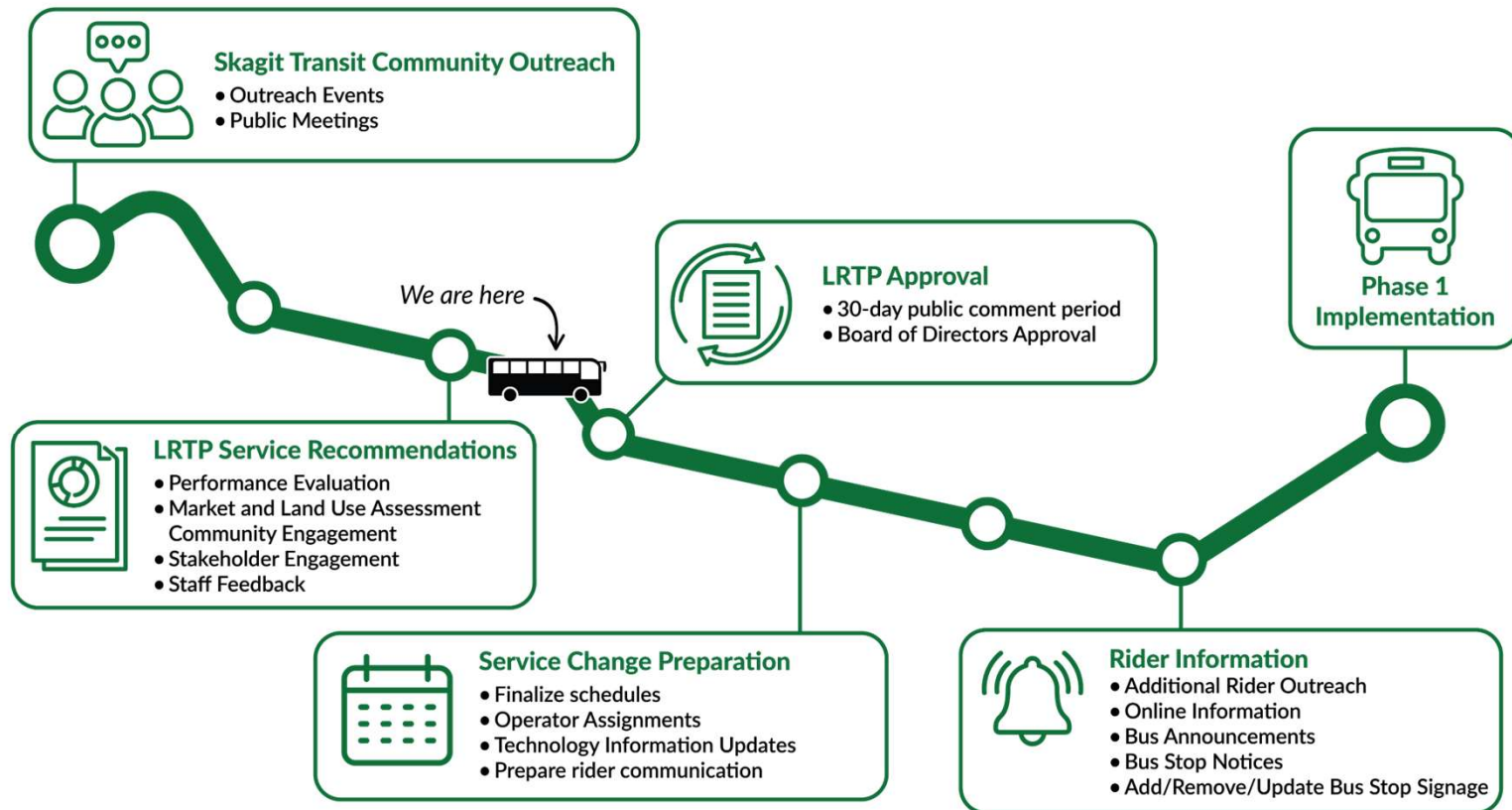
# Existing



# Recommended



# Next Steps

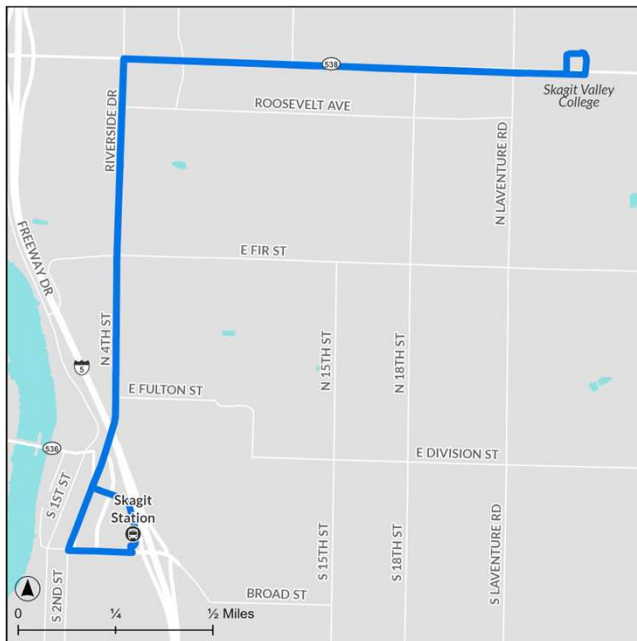




# Central County

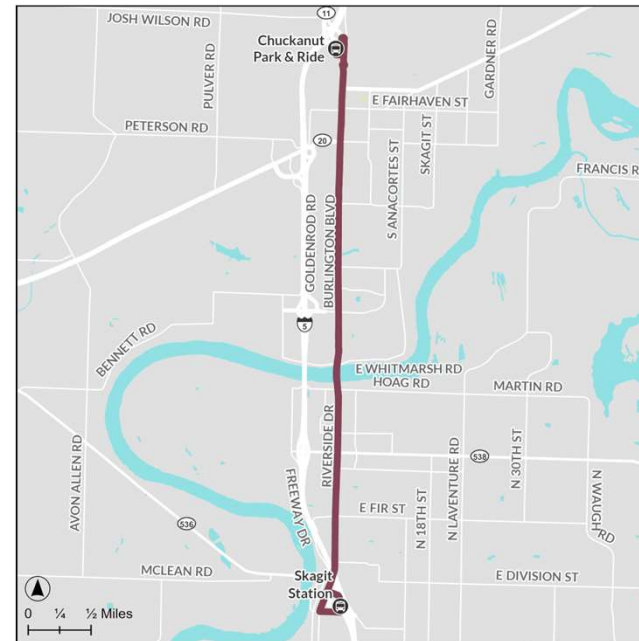
## Route 205 College Way

No Change



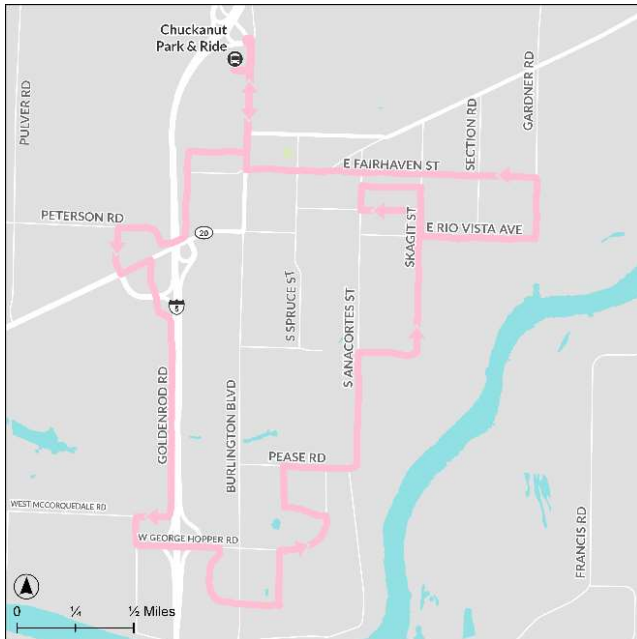
## Route 208 Burlington-MV

No change



# Route 101 Burlington

## Existing Alignment



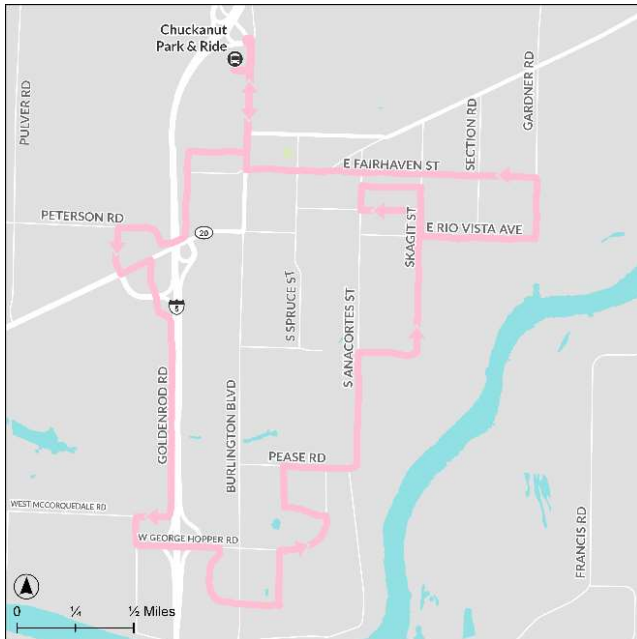
## Recommended Improvements

***Convert to two-way service and extend to Walmart***

- Improve frequency to 30 minutes
- Extend night service

# Route 101 Burlington

## Existing Alignment

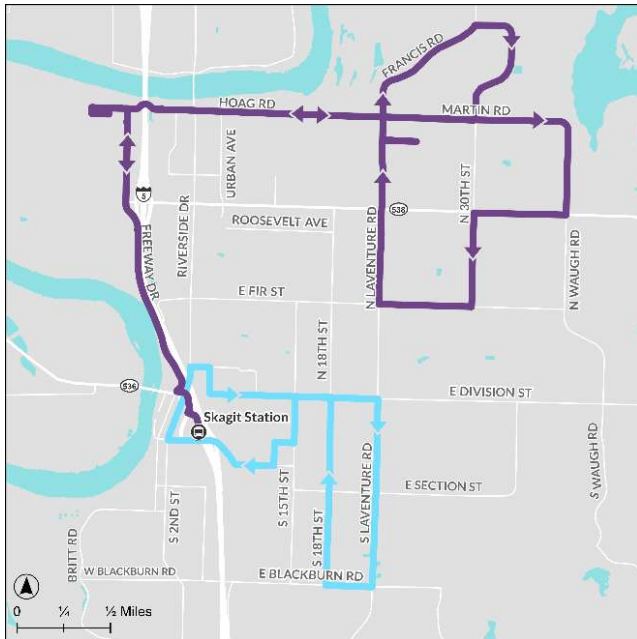


## Recommended Alignment



# Route 201 Mount Vernon

## Existing Alignment



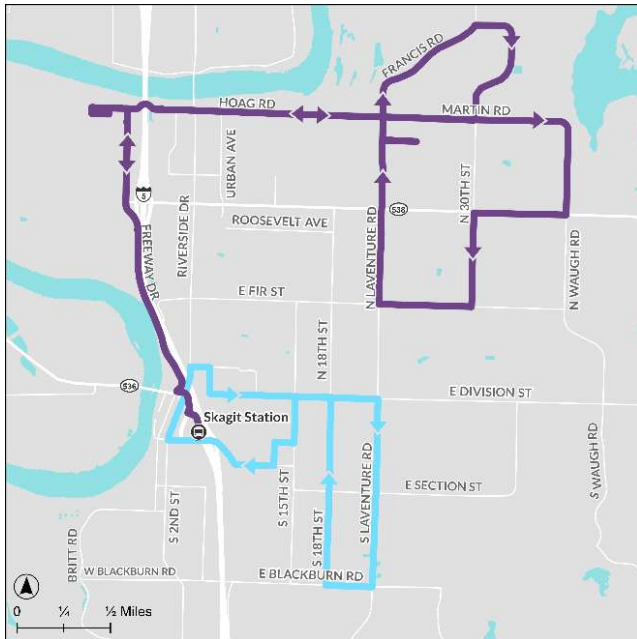
## Recommended Improvements

***Consolidate indirect routes in Mount Vernon into a new route***

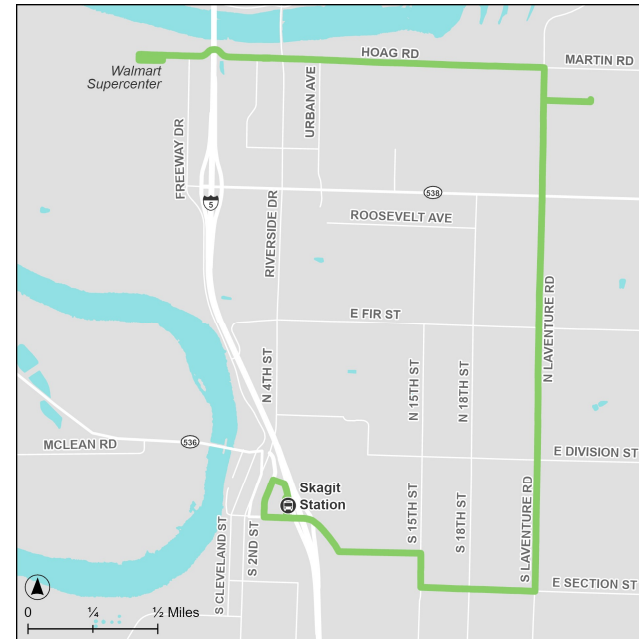
- New route replacing segments of Routes 206 and 207
- Extend night service

# Route 201 Mount Vernon

## Existing Alignment

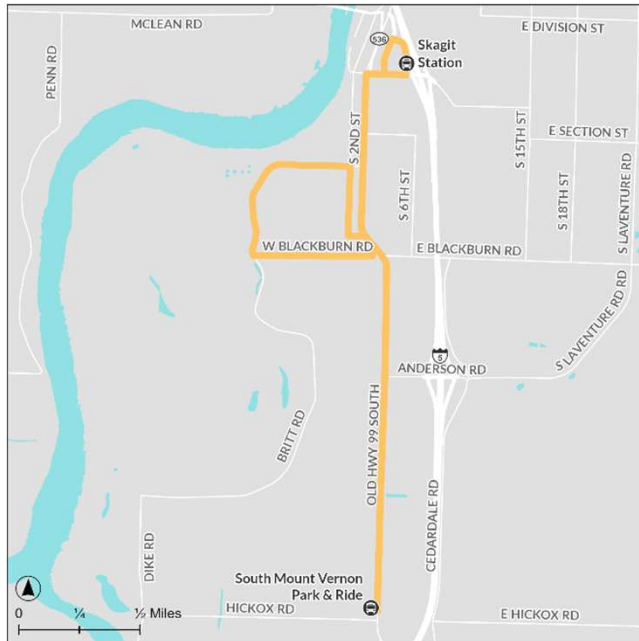


## Recommended Alignment



# Route 202 South Mount Vernon

## Existing Alignment



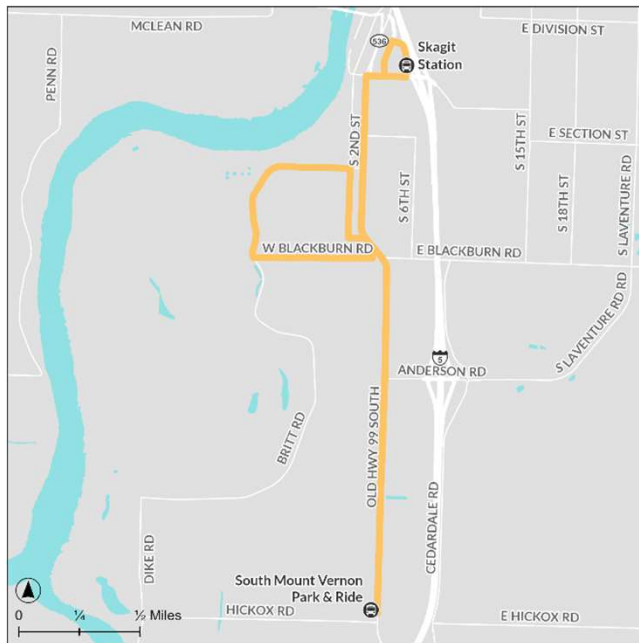
## Recommended Improvements

***Convert to two-way service along 2nd Street***

- Improve Sunday frequency to 30 minutes
- Extend night service

# Route 202 South Mount Vernon

## Existing Alignment



## Recommended Alignment

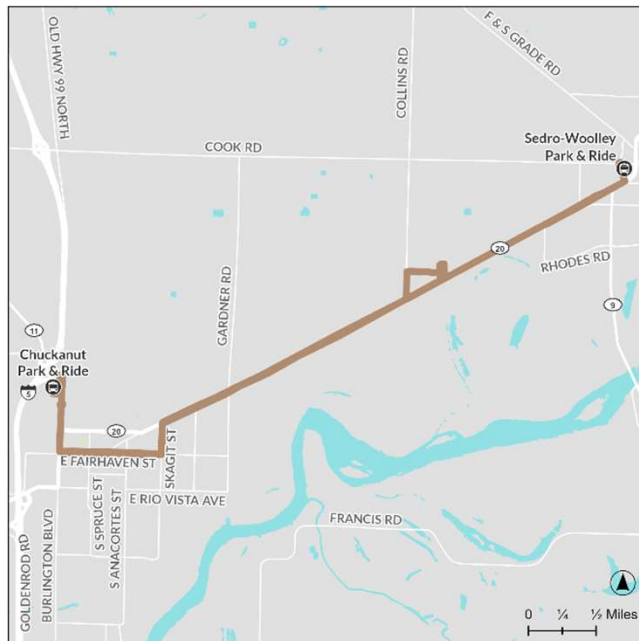




# East County

# Route 301 Sedro-Woolley

## Existing Alignment



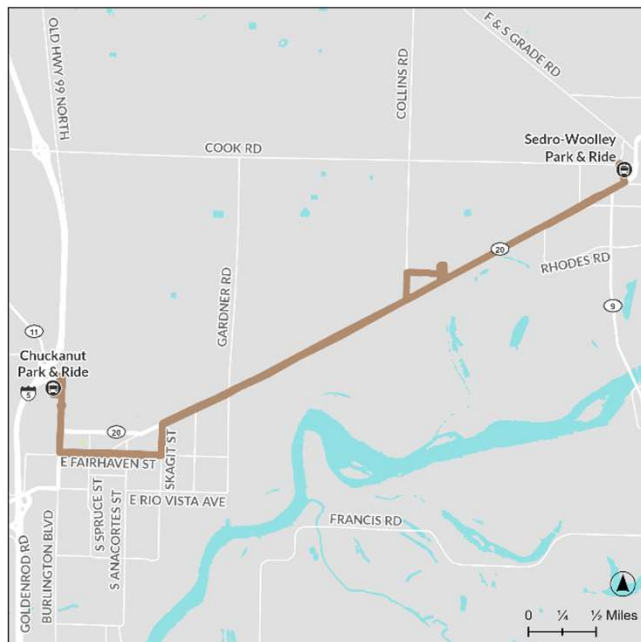
## Recommended Improvements

### *Extend to Skagit Regional Airport and Upper Skagit Reservation*

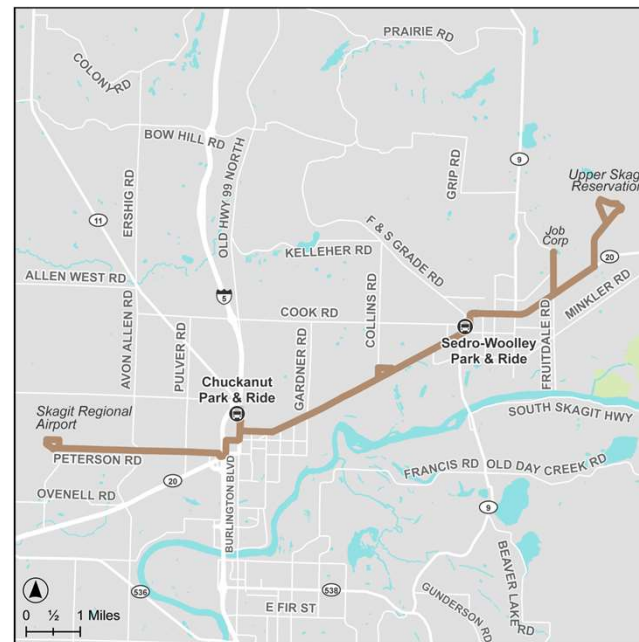
- Increase weekday frequency to 30 minutes
- Extend night service
- New route replacing segments of Routes 300 and 513

# Route 301 Sedro-Woolley

## Existing Alignment

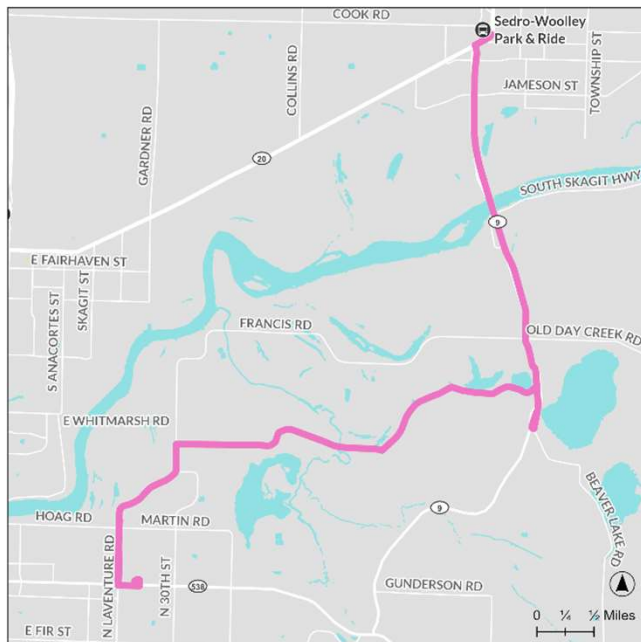


## Recommended Alignment



# Route 305 Clear Lake

## Existing Alignment



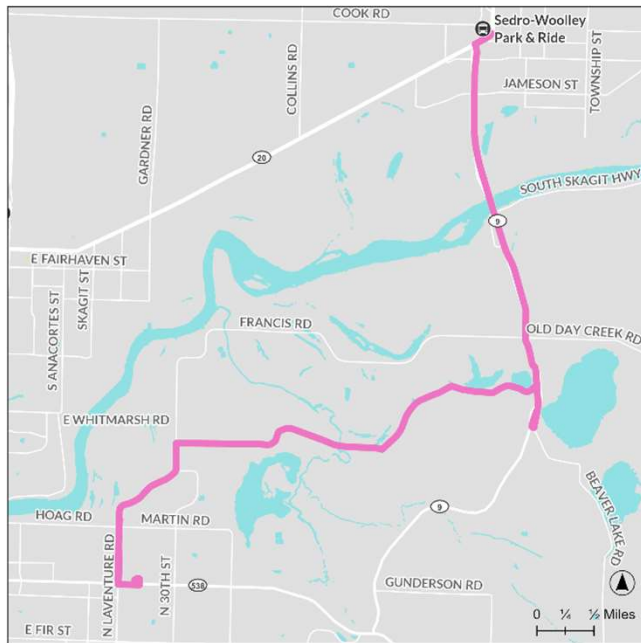
## Recommended Improvements

### *Extend to Skagit Station*

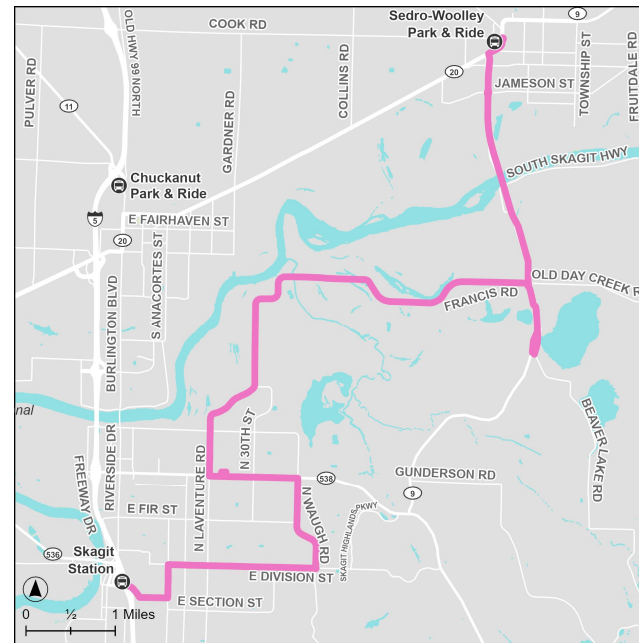
- New route replacing segments of Route 204
- Increase weekday frequency to 30 minutes
- Extend night service

# Route 305 Clear Lake

## Existing Alignment



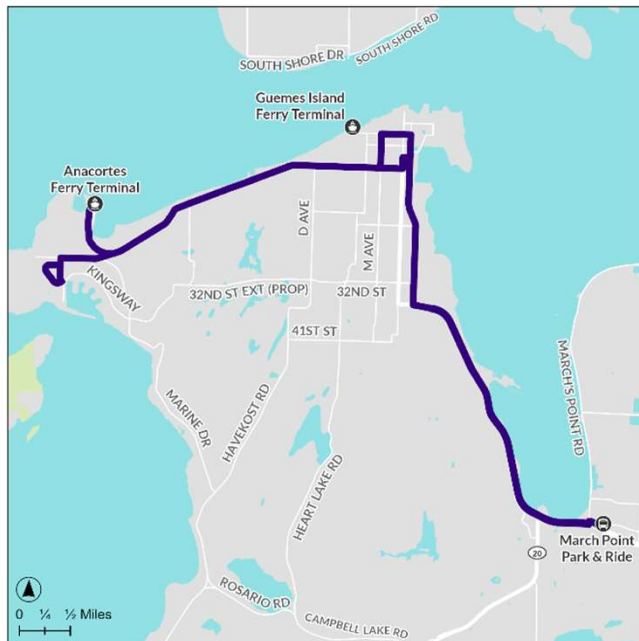
## Recommended Alignment



# West County

# Route 410 Anacortes

## Existing Alignment



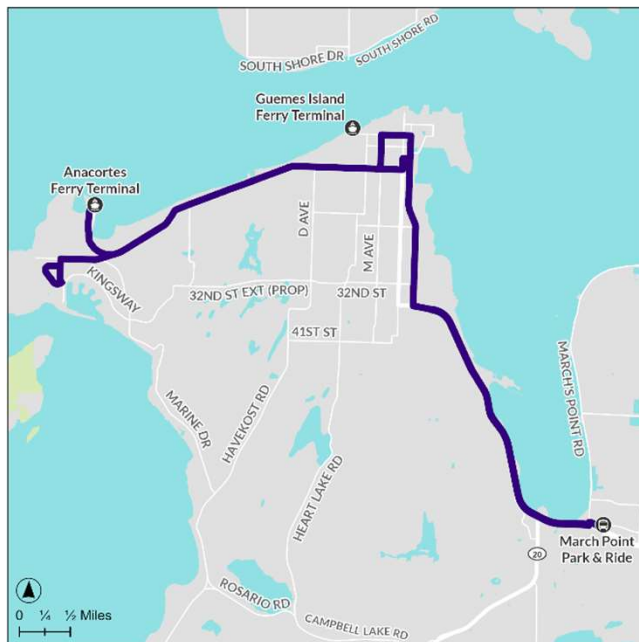
## Recommended Improvements

### *Shorten to Downtown Anacortes and extend to Island Hospital*

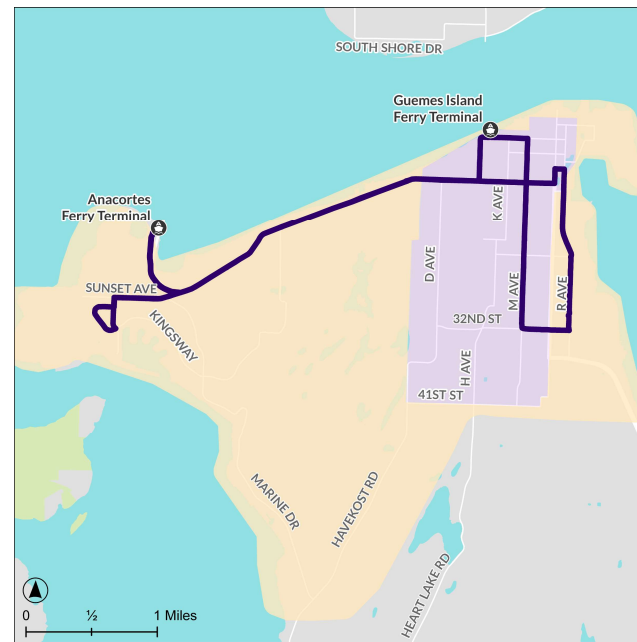
- New route replacing segments of Route 409
- Improve weekday frequency to 30 minutes and add Sunday service
- Extend night service

# Route 410 Anacortes

## Existing Alignment



## Recommended Alignment

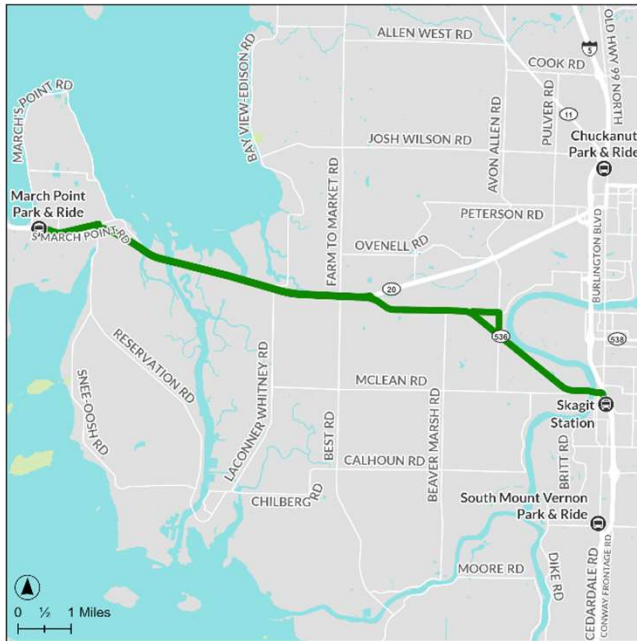




# Connector Routes

# Route 40X Mount Vernon/Anacortes

## Existing Alignment



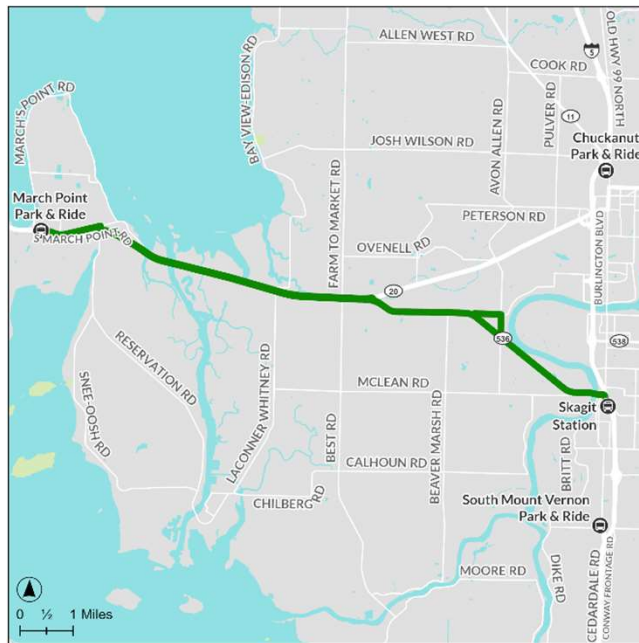
## Recommended Improvements

### *Extend to Anacortes*

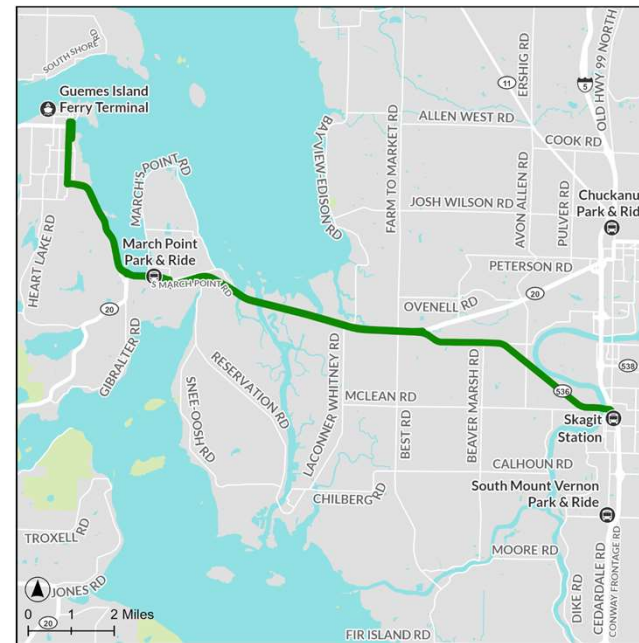
- Extend to Downtown Anacortes and add Sunday service
- Improve weekday frequency to 30 minutes
- Improve Sunday frequency to 60 minutes
- Extend night service

# Route 40X Mount Vernon/Anacortes

## Existing Alignment

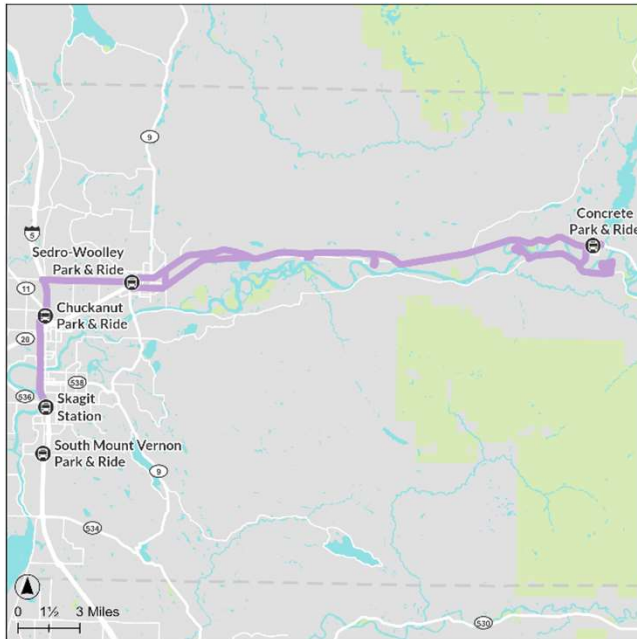


## Recommended Alignment



# Route 70X Sedro-Woolley/Concrete

## Existing Alignment



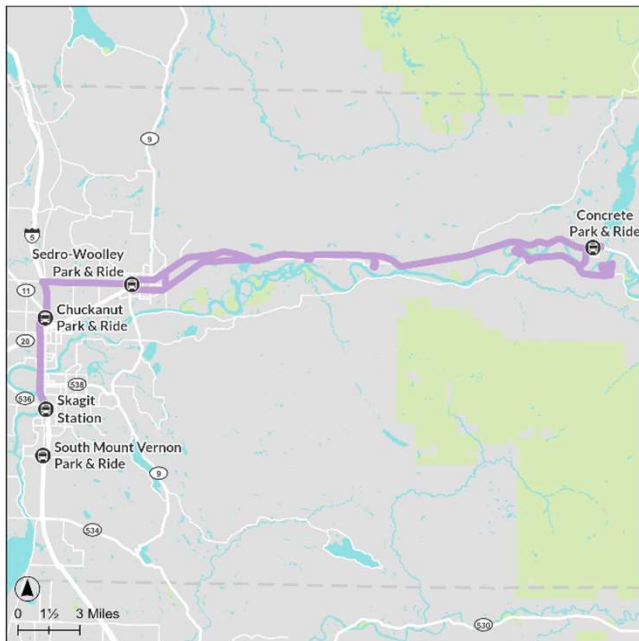
## Recommended Improvements

***Add trips and Sunday service.  
Shorten to Chuckanut Park & Ride***

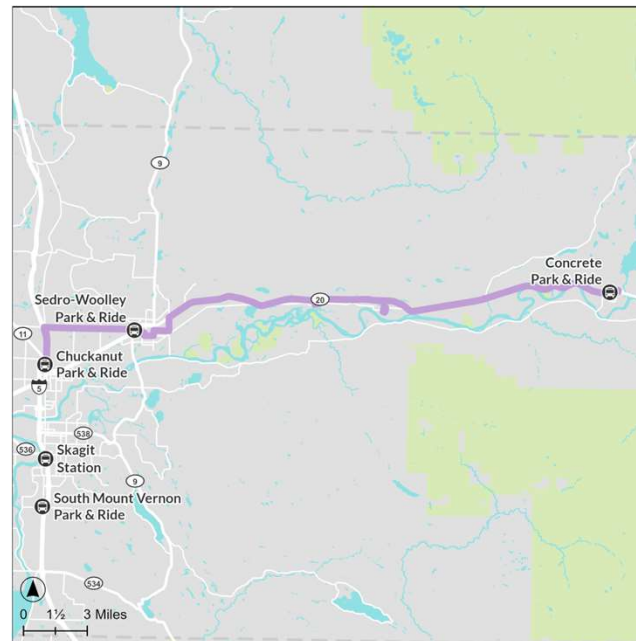
- Extend to Downtown Sedro-Woolley
- Increase weekday frequency to 60 minutes
- Extend night service

# Route 70X Sedro-Woolley/Concrete

## Existing Alignment

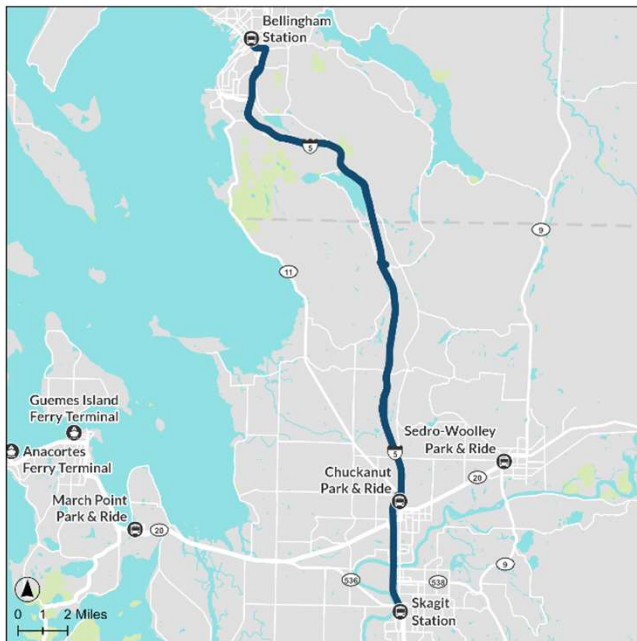


## Recommended Alignment



# Route 80X Bellingham Connect

## Existing Alignment



## Recommended Improvements

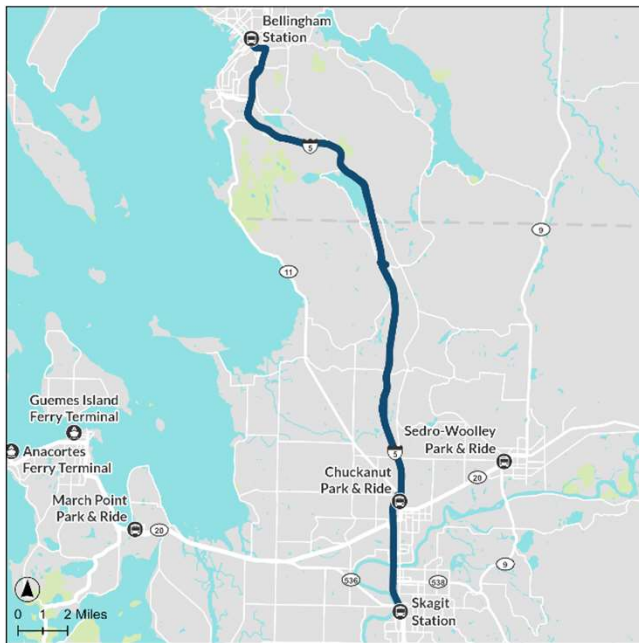
### *Add stop at Skagit Valley Casino Resort*

- Improve weekday and weekend frequency to 60 minutes
- Extend night service

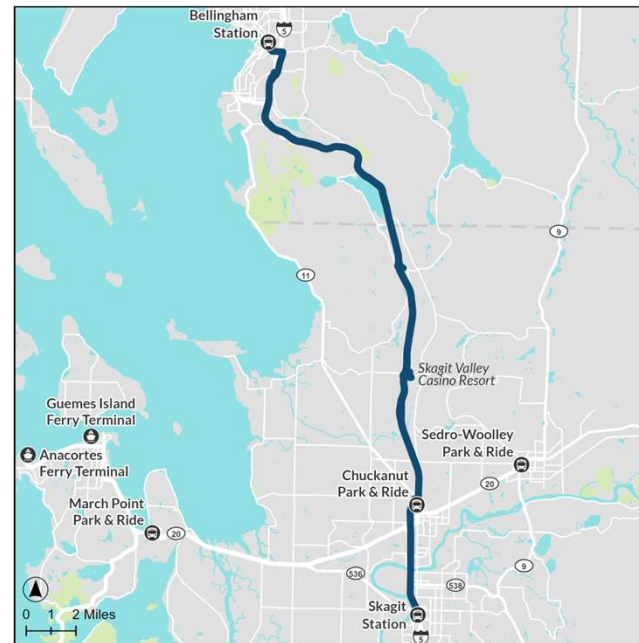


# Route 80X Bellingham Connect

## Existing Alignment



## Recommended Alignment





# Route 90X Everett Connect

## Existing Alignment



## Recommended Improvements

***Add stop at Smokey Point Transit Center and upgrade midday frequency.***

- Improve weekday frequency to 45-60 minutes
- Extend night service

# Route 90X Everett Connect

## Existing Alignment



## Recommended Alignment

